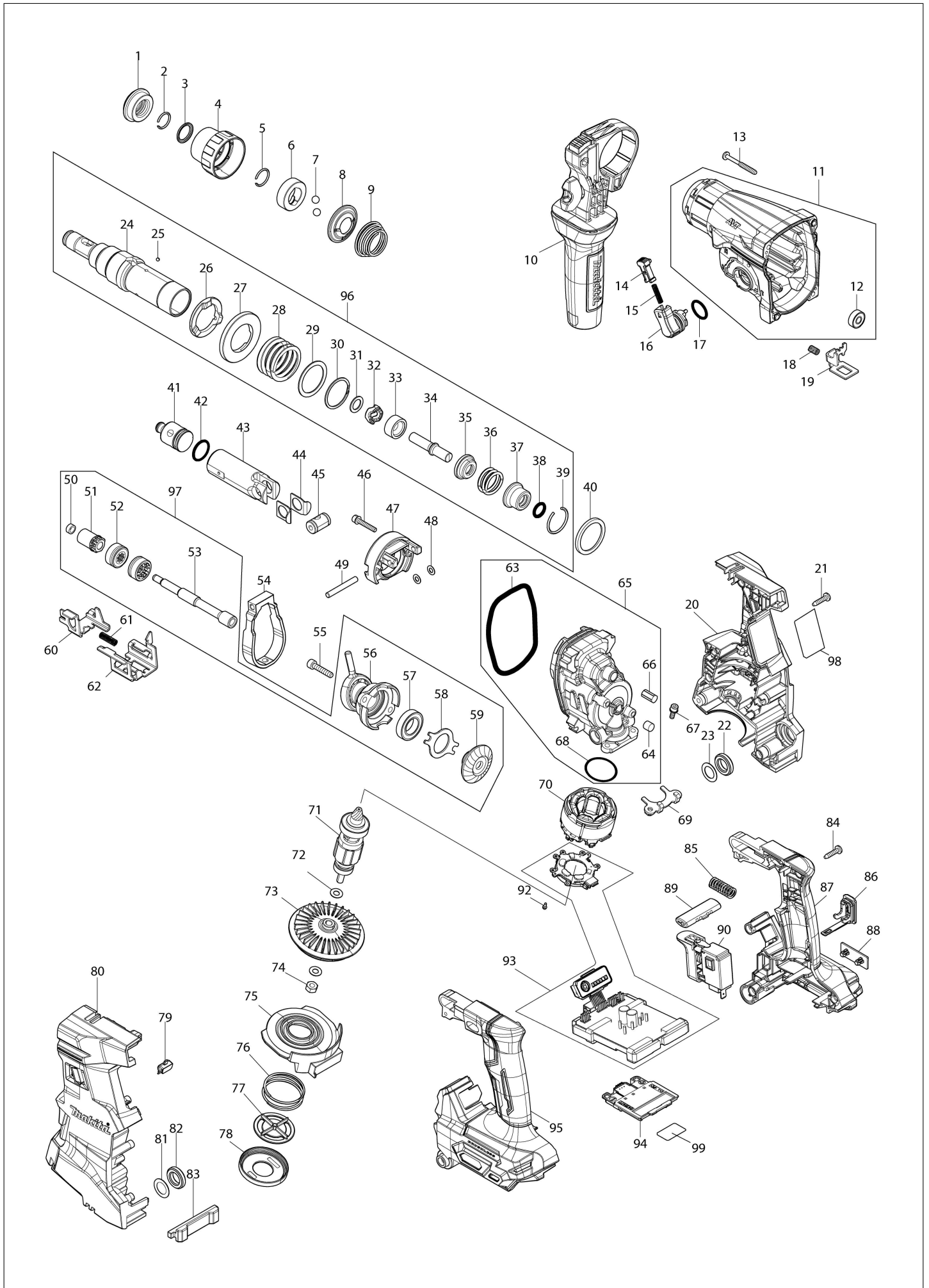


# (SG) HR011G / Cordless Combination Hammer



<b>SG</b>	<b>SINGAPORE</b>
-----------	------------------

## HR011G / Cordless Combination Hammer

Item	Sub	Parts No.	Parts Description	Qty	I/C	E/C No.	Close No.	Remark
001		286288-8	Cap 35	1				
002		233989-9	Ring spring 14	1				
003		346834-0	Washer 16	1				
004		4130J0-5	Chuck cover	1				
005		233992-0	Ring spring 15	1				
006		327269-4	Ring 17	1				
007		216022-2	Steel ball 7.0	2				
008		347944-6	Guide washer	1				
009		232503-8	Conical compression spring 21-34	1				
010		122K22-7	GRIP ASSEMBLY	1				
	C10	265625-9	Thumb screw M6X50	1				
011		137389-4	GEAR HOUSING SET	1				
	D10		INC. 12					
012		210028-2	Ball bearing 606ZZ	1				
013		266560-4	Binding head tapping screw 4X40	4				
014		457709-9	Lock button	1				
015		234264-6	Compression spring 3	1				
016		161656-5	Change lever complete	1				
017		213278-8	O-ring 17	1				
018		233360-7	Compression spring 4	1				
019		347E07-8	LOCK PLATE	1				
020		1831S4-7	HOUSING SET	1				
	D10		INC. 80					
021		266326-2	Binding head tapping screw 4X18	9				
022		459184-5	Cushion ring 12	1				
023		253798-0	Flat washer 13	1				
024		1412E3-3	TOOL HOLDER COMPLETE	1				
025		216068-8	Steel ball 3	3				
026		327D75-1	Driving flange	1				
027		227C33-0	SPUR GEAR 40	1				
028		232952-9	COMPRESSION SPRING 31	1				
029		267153-0	Flat washer 30	1				
030		257932-4	Spiro lock washer 30	1				
031		253634-0	FLAT WASHER 11	1				
032		422C70-1	CUSHION SLEEVE 11	1				
033		327F69-8	SLEEVE 9	1				
034		327F71-1	IMPACT BOLT A	1				
035		327F73-7	WASHER 10	1				
036		232969-2	COMPRESSION SPRING 20	1				
037		327F72-9	O-RING CASE	1				
038		213073-6	O-ring 9	1				
039		233979-2	Ring spring 28	1				
040		347D13-7	RING 30	1				
041		327F70-3	STRIKER	1				
042		213258-4	O-ring 17.5	1				
043		312J32-8	PISTON CYLINDER	1				
044		347E05-2	GUIDE PLATE	2				
045		327F74-5	PISTON JOINT	1				
046		922148-7	Hex. socket head bolt M4X25 WR	2				
047		1412E1-7	INNER SUPPORT COMPLETE	1				
048		253811-4	Flat washer 5	2				
049		256573-3	Pin 5	1				
050		257A41-5	Ring 6	1				
051		227B56-2	Spur gear 9	1				
052		327F77-9	CLUTCH CAM	2				
053		327F75-3	CAM SHAFT	1				
054		313664-4	COUNTER WEIGHT	1				
055		265F03-9	HEX.SOCKET HEAD BOLT M5X25	2				
056		219041-7	SWASH BEARING 10	1				
057		210302-8	Ball bearing 6903ZZ	1				
058		347E06-0	BEARING RETAINER B	1				
059		227C31-4	SPIRAL BEVEL GEAR 29	1				
060		347E09-4	CHANGE PLATE B	1				
061		234343-0	Compression spring 5	1				
062		347E08-6	CHANGE PLATE A	1				

B:HR011GM202(H)

Interchange  
 O : Yes  
 X : No  
 < : the new part can be substituted for the current.  
 > : the current part can be substituted for the new.  
 S : Interchangeable as a set.

<b>SG</b>	<b>SINGAPORE</b>
-----------	------------------

## HR011G / Cordless Combination Hammer

Item	Sub	Parts No.	Parts Description	Qty	I/C	E/C No.	Close No.	Remark
063		213850-6	O-ring 74	1				
064		443153-6	Felt	1				
065		137392-5	INNER HOUSING ASS'Y	1				
	D10		INC. 63,64,66,68					
066		263045-1	Rubber pin 8	1				
067		922118-6	Hex. socket head bolt M4X12 WR	2				
068		213415-4	O-ring 28	1				
069		347E10-9	BEARING RETAINER A	1				
070		629D40-9	STATOR	1				
071		619911-4	ROTOR	1				
072		253715-0	Flat washer 6	2				
073		240262-0	FAN 65	1				
074		252186-8	Hex. nut M6	1				
075		4133C3-8	AIR DUCT	1				
076		232796-7	Compression spring 37	1				
077		413N14-8	Valve	1				
078		413N15-6	Cap	1				
079		620S12-7	LED CIRCUIT	1				
080		1831S4-7	HOUSING SET	1				
	D10		INC. 20					
081		253798-0	Flat washer 13	1				
082		459184-5	Cushion ring 12	1				
083		422C71-9	BATTERY CUSHION	1				
084		266326-2	Binding head tapping screw 4X18	5				
085		232953-7	COMPRESSION SPRING 8	1				
086		140G30-2	Cap complete	1				
	C10	213A05-9	O-ring 16	1				
087		1831S1-3	HANDLE SET	1				
	C10	263005-3	Rubber pin 6	2				
	D10		INC. 95					
088		459753-2	Cap	1				
089		453124-5	F/R change lever	1				
090		651439-6	Switch C3JR-4B-2	1				
092		652119-7	Pan head screw M2X6	6				
093		137396-7	CONTROLLER ASS'Y	1				
094		632P64-8	Terminal unit	1				
095		1831S1-3	HANDLE SET	1				
	C10	263005-3	Rubber pin 6	2				
	D10		INC. 87					
096		137390-9	TOOL HOLDER ASS'Y	1				
	D10		INC. 24-39					
097		137391-7	CAM SHAFT ASS'Y	1				
	D10		INC. 50-53,56-59					
098		8152F2-5	HR011G NAME PLATE	1				
099		8152F4-1	HR011G SERIAL NO. LABEL	1				
A01		331886-4	Depth gauge	1				
A02		194683-7	Grease vessel set	1				
A04B		821552-6	Connector plastic case (type 4)	1				
	C10	453974-8	Latch	4				
A05B		836491-7	INNER TRAY	1				
A06B		***DC40RA	DC40RA FAST CHARGER	1				
	D10		COMPO-PARTS					
A07B		412393-7	Battery cover	2				
A08B		191B26-6	Battery BL4040 set	2				
A09B		***DX17	DX17 DUST COLLECTION SYSTEM	1				
	D10		COMPO-PARTS					
A10B		422784-4	Sealing cap	5				
F03		1914L7-6	Dust cup set	1				
F04		1914L9-2	Dust cup set	1				
F05		191W90-3	Hook set	1				
F06		1916C0-9	DUST CASE SET	1				
F09		192877-8	Drill chuck 13 set	1				
F11		192892-2	Keyless drill chuck set	1				
F13		194041-7	Drill chuck set	1				
F14		194254-0	Keyless drill chuck set	1				

B:HR011GM202(H)

Interchange  
 O : Yes  
 X : No  
 < : the new part can be substituted for the current.  
 > : the current part can be substituted for the new.  
 S : Interchangeable as a set.

