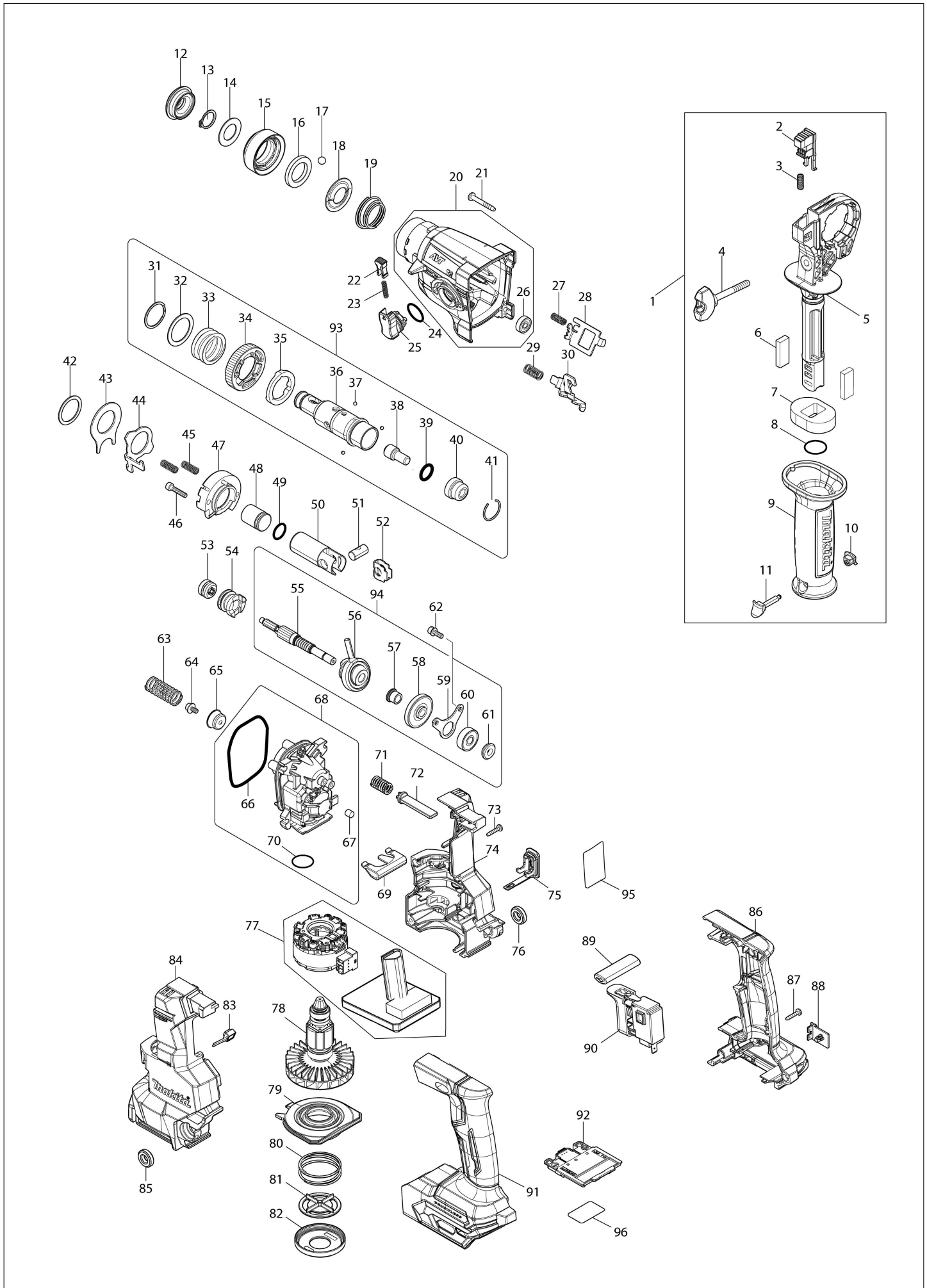


(SG) HR010G / Cordless Combination Hammer



SG	SINGAPORE
-----------	------------------

HR010G / Cordless Combination Hammer

Item	Sub	Parts No.	Parts Description	Qty	I/C	E/C No.	Close No.	Remark
001		122D63-1	Grip assembly	1				
	D10		INC. 2-11					
002		413N19-8	Lock button	1				
003		233360-7	Compression spring 4	1				
004		265625-9	Thumb screw M6X50	1				
005		413N18-0	Side handle base	1				
006		422A20-4	Sponge sheet B	2				
007		422A19-9	Sponge sheet A	1				
008		213262-3	O-ring 18	1				
009		413N20-3	Grip 36	1				
010		422255-1	Cap	1				
011		162C55-2	Fix pin	1				
012		286037-3	Cap 34	1				
013		961057-5	Retaining ring (EXT) S-17	1				
014		253377-4	Flat washer 17	1				
015		458845-4	Chuck cover	1				
016		257416-2	Ring 21	1				
017		216022-2	Steel ball 7.0	2				
018		346177-0	Guide washer	1				
019		232347-6	Conical compression spring 21-29	1				
020		136975-8	Gear housing assembly	1				
	D10		INC. 26					
021		266050-7	Binding head tapping screw 4X30	4				
022		458851-9	Lock button	1				
023		234264-6	Compression spring 3	1				
024		213278-8	O-ring 17	1				
025		162C16-2	Change lever complete	1				
026		210035-5	Ball bearing 625DDW	1				
027		232805-2	Compression spring 4	1				
028		347A82-0	Lock plate	1				
029-1		232795-9	Compression spring 8	1				
030-1		347A83-8	Change plate B	1				
031		347555-7	Spiral retaining ring 25	1				
032		267304-5	Flat washer 25	1				
033		232360-4	Compression spring 25	1				
034		226854-9	Spur gear 44	1				
035		327B07-6	Driving flange	1				
036		326886-7	Tool holder	1				
037		216019-1	Steel ball 3	3			DX714	
037-1		216068-8	Steel ball 3	3	<	DX714		
038		326887-5	Impact bolt	1				
039		213117-2	O-ring 11	1				
040		327C61-6	Cup sleeve 9	1				
041		233942-5	Ring spring 22	1				
042		267175-0	Flat washer 24	1				
043		345681-6	Joint plate	1				
044		347A81-2	Change plate A	1				
045		232794-1	Compression spring 6	2				
046		922137-2	Hex. socket head bolt M4X20	2				
047		141M98-7	Inner support complete	1				
048		327215-7	Striker	1				
049		213832-8	O-ring 13	1				
050		327B06-8	Piston cylinder	1				
051		324612-8	Piston joint	1				
052		347A84-6	Guide plate	1				
053		227A97-2	Spur gear 12	1				
054		327B05-0	Clutch cam	1				
055		327B04-2	Cam shaft	1				
056		219032-8	Swash bearing 9	1				
057		257893-8	Sleeve 7	1				
058		227A27-3	Spiral bevel gear 25	1				
059		347A79-9	Bearing retainer B	1				
060		210025-8	Ball bearing 627LLB	1				
061		257897-0	Ring 7	1				
062		266273-7	Hex. socket head bolt M4X12	2				

B:HR010GD201(H)

Interchange

O: Yes

X: No

<: the new part can be substituted for the current.

>: the current part can be substituted for the new.

S: Interchangeable as a set.

SG	SINGAPORE
-----------	------------------

HR010G / Cordless Combination Hammer

Item	Sub	Parts No.	Parts Description	Qty	I/C	E/C No.	Close No.	Remark
063		232793-3	Compression spring 12	1				
064		266831-9	Hex. socket head bolt M4X8	1				
065		347A80-4	Spring guide	1				
066		213833-6	O-ring 60	1				
067		443138-2	Filter	1				
068		136976-6	Inner housing assembly	1				
	D10		INC. 66,67,70					
069		347A85-4	Bearing retainer	1				
070		213325-5	O-ring 19	1				
071		232797-5	Compression spring 8	1				
072		413N16-4	Pusher	1				
073		266130-9	Binding head tapping screw 3X16	5				
074		183Y25-0	Housing set	1				
	D10		INC. 84					
075		140G30-2	Cap complete	1				
076		422A09-2	Cushion ring 8	1				
077		629B82-1	Stator complete	1				
078		619782-9	Rotor	1				
	C11	213A62-7	O-ring 11	1				
079		413N13-0	Air duct	1				
080		232796-7	Compression spring 37	1				
081		413N14-8	Valve	1				
082		413N15-6	Cap	1				
083		620K85-2	LED circuit	1				
084		183Y25-0	Housing set	1				
	D10		INC. 74					
085		422A09-2	Cushion ring 8	1				
086		183Y92-5	Handle set	1				
	C10	263005-3	Rubber pin 6	2				
	C20	8007R2-2	XGT logo label	1				
	D10		INC. 91					
087		266130-9	Binding head tapping screw 3X16	6				
088		422A08-4	Cap	1				
089		454980-6	F/R change lever	1				
090		651439-6	Switch C3JR-4B-2	1				
091		183Y92-5	Handle set	1				
	C10	263005-3	Rubber pin 6	2				
	C20	8007R2-2	XGT logo label	1				
	D10		INC. 86					
092		632P65-6	Terminal unit	1				
093		136977-4	Tool holder assembly	1				DX714
	D10		INC. 31-41					DX714
093-1		137319-5	Tool holder assembly	1	<	DX714		
	D10		INC. 31-41			DX714		
094		136978-2	Cam shaft assembly	1				
	D10		INC. 55-61					
095		8589B0-0	Name plate HR010G	1				
096		8589F2-4	Serial No. label HR010G	1				
A01		413N42-3	Depth gauge	1				
A02B		821552-6	Connector plastic case (type 4)	1				
	C10	453974-8	Latch	4				
A03B		8356R1-9	Inner tray	1				
A04B		191B36-3	Battery BL4025 set	2				
A05B		412393-7	Battery cover	1				
A06B		***DC40RA	DC40RA FAST CHARGER	1				
	D10		COMPO-PARTS					
A07B		***DX16	DX16DUST COLLECTION SYSTEM SET	1				
	C10	422992-7	Sealing cap	5				
	D10		COMPO-PARTS					
B01		199544-6	Hammer service kit	1				
	C10	195127-0	Oil vessel set	1				
	D10		INC. 12,13,17,39,41,49					
F03		1911K0-5	Tool hanger set	1				
F05		1911P5-0	Dust case set	1				
F06		1911P8-4	Dust cup set	1				

B:HR010GD201(H)

Interchange
 O : Yes
 X : No
 < : the new part can be substituted for the current.
 > : the current part can be substituted for the new.
 S : Interchangeable as a set.

