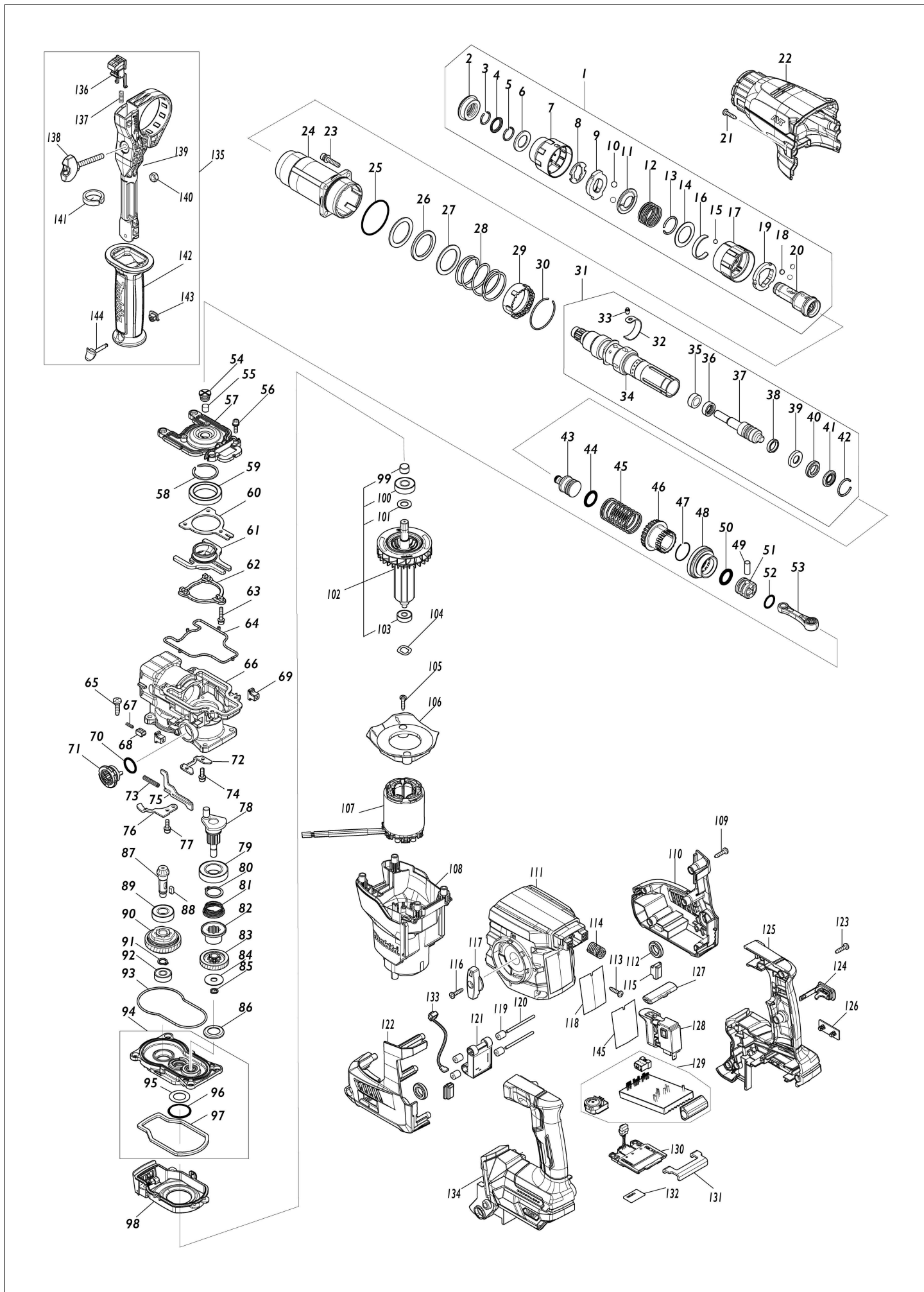


(SG) HR009G / Cordless Combination Hammer



SG	SINGAPORE
-----------	------------------

HR009G / Cordless Combination Hammer

Item	Sub	Parts No.	Parts Description	Qty	I/C	E/C No.	Close No.	Remark
001		127219-7	Tool holder assembly	1				
	D10		INC. 2-20					
002		422570-3	Cap 35	1				
003		233989-9	Ring spring 14	1				
004-1		346834-0	Washer 16	1				
005		233992-0	Ring spring 15	1				
006		253467-3	Washer 17	1				
007		459162-5	Chuck cover	1				
008		347687-0	Plate	1				
009		310926-1	Stopper	1				
010		216022-2	Steel ball 7.0	2				
011		347745-2	Guide washer	1				
012		232554-1	Compression spring 26	1				
013		233924-7	Ring spring 21	1				
014		253468-1	Flat washer 24	1				
015		216018-3	Steel ball 5.0	1				
016		232555-9	Leaf spring	1				
017		459159-4	Change cover A	1				
018		216013-3	Steel ball 6	3				
019		347496-7	Change ring A	1				
020		327264-4	Tool holder	1				
021		266326-2	Binding head tapping screw 4X18	2				
022		459167-5	Barrel cover	1				
023		266793-1	Hex. socket head bolt M5X25 WR	4				
024		140J35-0	Barrel complete	1				
	C10	213636-8	Oil seal 25	1				
025		213620-3	O-ring 46	1				
026		422493-5	Rubber ring 31	1				
027		267354-0	Flat washer 31	2				
028		232496-9	Compression spring 37	1				
029		419986-1	Lock sleeve	1				
030		233952-2	Ring spring 41	1				
031		136305-3	Tool holder assembly	1				
	D10		INC. 32-42					
032		347501-0	Leaf spring	1				
033		256598-7	Shoulder pin 4	1				
034		327272-5	Tool holder guide	1				
035		327515-5	Sleeve 11	1				
036		327516-3	Ring 11	1				
037		140S90-6	Impact bolt B complete	1				
038		213880-7	Seal ring 12	1				
039		327268-6	Ring 11	1				
040		424267-0	Cushion ring 12	1				
041		327271-7	Washer 11	1				
042		231987-7	Ring spring 21	1				
043		327266-0	Striker	1				
044		213881-5	O-ring 16	1				
045		232497-7	Compression spring 27	1				
046		327276-7	Driving sleeve	1				
047		232501-2	Ring spring 24	1				
048		226868-8	Spiral bevel gear 31	1				
049		268122-4	Pin 7	1				
050		213881-5	O-ring 16	1				
051		319807-6	Piston	1				
052		213226-7	O-ring 16	1				
053		140J36-8	Connecting rod complete	1				
054		459180-3	Filter cap	1				
055		443153-6	Felt	1				
056		922123-3	Hex. socket head bolt M4X14 WR	4				
057		319802-6	Crank cap	1				
058		961140-8	Retaining ring (EXT) WR-30	1				
059		211423-9	Ball bearing 6806DDW	1				
060		347500-2	Bearing retainer B	1				
061		140J31-8	Counter weight complete	1				
062		310927-9	Weight retainer	1				

B:HR009GM201(H)

Interchange
 O : Yes
 X : No
 < : the new part can be substituted for the current.
 > : the current part can be substituted for the new.
 S : Interchangeable as a set.

SG	SINGAPORE
-----------	------------------

HR009G / Cordless Combination Hammer

Item	Sub	Parts No.	Parts Description	Qty	I/C	E/C No.	Close No.	Remark
063		266948-8	Hex. socket head bolt M4X20 WR	3				
064		459182-9	Seal ring B	1				
065		266021-4	Binding head tapping screw 5X20	4				
066		140J33-4	Crank housing complete	1				
067		232499-3	Compression spring 2	1				
068		310929-5	Push cone	1				
069		455165-7	Fix guide	2				
070		213262-3	O-ring 18	1				
071		459175-6	Link lever	1				
072		347497-5	Bearing retainer A	1				
073		234019-9	Compression spring 4	1				
074		922123-3	Hex. socket head bolt M4X14 WR	2				
075		345814-3	Link plate	1				
076		347498-3	Guide plate	1				
077		922123-3	Hex. socket head bolt M4X14 WR	1				
078		140M22-7	Crankshaft complete	1				
079		211323-3	Ball bearing 6904LLU	1				
080		961060-6	Retaining ring (EXT) S-20	1				
081		232498-5	Conical compression spring 21-26	1				
082		327273-3	Clutch	1				
083		226869-6	Helical gear 31	1				
084		267353-2	Flat washer 8	1				
085		961034-7	Retaining ring (EXT) WR-8	1				
086		345818-5	Cup washer 16	1				
087		226867-0	Spiral bevel gear 8	1				
088		254239-9	Key 4	1				
089		211131-2	Ball bearing 6001DDW	1				
090		125386-2	Torque limiter assembly	1				
091		961006-2	Retaining ring (EXT) S-10	1				
092		210005-4	Ball bearing 608DDW	1				
093		459181-1	Seal ring A	1				
094		136330-4	Gear housing assembly	1				
	D10		INC. 95-97					
095		253749-3	Flat washer 16	1				
096		213445-5	O-ring 26	1				
097		459183-7	Sponge sheet	1				
098		140J32-6	Air duct complete	1				
099		331775-3	Sleeve 10	1				
100		211097-6	Ball bearing 6000LLB	1				
101		253828-7	Flat washer 10	1				
102		519722-6	Rotor assembly	1				
	D10		INC. 99-101,103					
103		210022-4	Ball bearing 626DDW	1				
104		253555-6	Wave washer 12	1				
105		266326-2	Binding head tapping screw 4X18	2				
106		413F13-2	Baffle plate	1				
107		629A96-4	Stator	1				
108		141H81-4	Motor housing complete	1				
	C10	263027-3	Rubber pin 4	1				
109		266326-2	Binding head tapping screw 4X18	5				
110		183V77-3	Housing set	1				
	D10		INC. 122					
111		413F12-4	Handle base	1				
112		459184-5	Cushion ring 12	2				
113		266326-2	Binding head tapping screw 4X18	4				
114		232500-4	Compression spring 10	1				
115		422863-8	Battery cushion	2				
116		266326-2	Binding head tapping screw 4X18	1				
117		459174-8	Change lever	1				
118		8119X5-5	Name plate HR009G	1				
119		422472-3	Sponge sleeve 3	4				
120		256886-2	Rod 3	2				
121		620J19-9	Accelerometer circuit	1				
122		183V77-3	Housing set	1				
	D10		INC. 110					

B:HR009GM201(H)

Interchange
 O : Yes
 X : No
 < : the new part can be substituted for the current.
 > : the current part can be substituted for the new.
 S : Interchangeable as a set.

