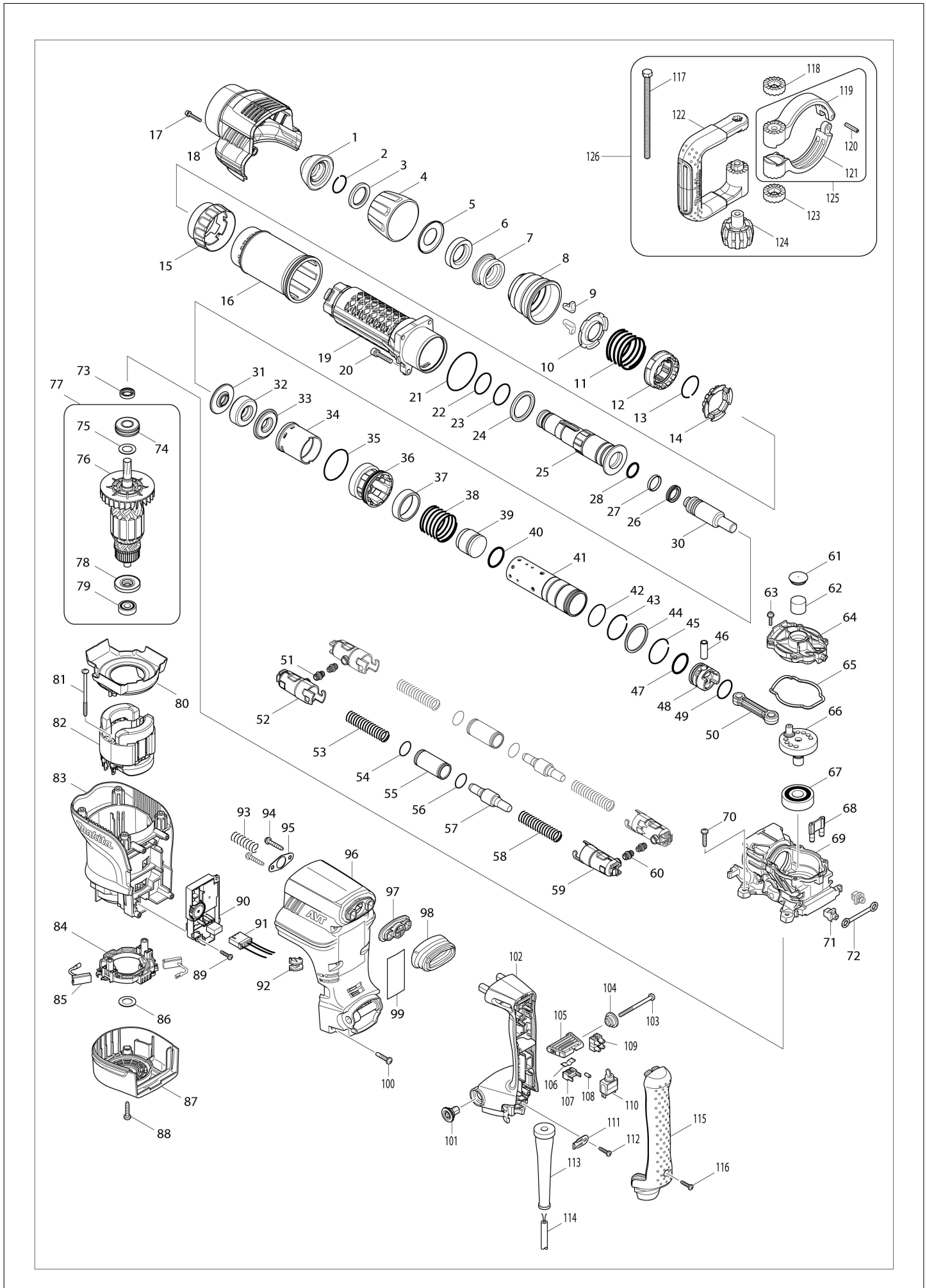


(SG) HM1111C / Demolition Hammer



HM111C / Demolition Hammer

Item	Sub	Parts No.	Parts Description	Qty	I/C	E/C No.	Close No.	Remark
001		286285-4	Tool holder cap	1				
002		233948-3	Ring spring 25	1				
003		257308-5	Ring 28	1				
004		450064-8	Chuck cover	1				
005		346247-5	Cup washer 28	1				
006		262161-6	Rubber ring 28	1				
007		324752-2	Chuck ring	1				
008		451836-4	Release cover	1				
009		310178-4	Tool retainer	2				
010		345804-6	Spring guide	1				
011		234180-2	Compression spring 47	1				
012		313193-7	Change ring	1				
013		233982-3	Ring spring 33	1				
014		325904-8	Lock ring	1				
015		451842-9	Change ring cover	1				
016		451835-6	Barrel cover	1				
017		922148-7	Hex. socket head bolt M4X25 WR	1				
018		451845-3	Crank housing cover	1				
019		140411-8	Barrel complete	1				
020		922353-6	Hex. socket head bolt M6X30 WR	4				
021		213654-6	O-ring 60	1				
022		213492-6	O-ring 32	1				
023		213492-6	O-ring 32	1				
024		262135-7	Rubber ring 36	1				
025		325901-4	Tool holder	1				
026		213281-9	X-ring 18	1				
027		213392-0	Fluoro carbon resin ring 25	1				
028		213317-4	O-ring 20	1				
030		325902-2	Impact bolt	1				
031		325903-0	Shoulder sleeve 19	1				
032		422053-3	Rubber ring 20	1				
033		325903-0	Shoulder sleeve 19	1				
034		412096-3	Slide sleeve	1				
035		213606-7	O-ring 48	1				
036		318604-7	Cylinder guide	1				
037		313194-5	Ring 39	1				
038		234178-9	Compression spring 40	1				
039		325905-6	Striker	1				
040		213536-2	O-ring 27	1				
041		331892-9	Cylinder 35	1				
042		213458-6	O-ring 34	1				
043		233981-5	Ring spring 38	1				
044		267423-7	Flat washer 40	1				
045		233981-5	Ring spring 38	1				
046		331911-1	Pipe 10	1				
047		213536-2	O-ring 27	1				
048		451833-0	Piston	1				
049		213415-4	O-ring 28	1				
050		451834-8	Connecting rod	1				
051		422054-1	Rubber pipe	2				
052		451843-7	Front pipe holder	2				
053		234179-7	Compression spring 14	2				
054		213961-7	O-ring 22	2				
055		331893-7	Pipe 20	2				
056		213961-7	O-ring 22	2				
057		325906-4	Counter weight	2				
058		234179-7	Compression spring 14	2				
059		451844-5	Rear pipe holder	2				
060		422054-1	Rubber pipe	2				
061		424311-3	Filter cap	1				
062		443127-7	Filter	1				
063		911133-5	Pan head screw M4X18 WR	5				
064		451838-0	Crank cap	1				
065		424312-1	Seal ring	1				
066		325899-5	Crankshaft	1				

Interchange
O : Yes
X : No
< : the new part can be substituted for the current.
> : the current part can be substituted for the new.
S : Interchangeable as a set.

HM111C / Demolition Hammer

Item	Sub	Parts No.	Parts Description	Qty	I/C	E/C No.	Close No.	Remark
067		211279-0	Ball bearing 6303LLU	1				
068		451848-7	Air pipe	1				
069		140407-9	Crank housing complete	1				
070		266041-8	Binding head tapping screw 5X25	4				
071		419008-7	Fix guide	2				
072		423345-3	Cushion plate	1				
073		213133-4	Oil seal 12	1				
074		211295-2	Ball bearing 6202LLU	1				
075		267215-4	Flat washer 15	1				
076		241908-1	Fan 80	1				
077		517858-5	Armature assembly 220-240V	1				
	D10		INC. 74-76,78,79					
078		681642-5	Insulation washer	1				
079		210059-1	Ball bearing 6000DDW	1				
080		451837-2	Baffle plate	1				
081		266568-8	Binding head tapping screw 5X80	2				
082		623418-4	Field 220-240V	1				
083		451840-3	Motor housing	1				
084		638700-8	Brush holder unit	1				
085		194412-8	Carbon brush set CB-171	1			92823	
085-1		195844-2	Carbon brush set CB-175	1	O	92823		
086		267215-4	Flat washer 15	1				
087		451839-8	Rear cover	1				
088		266041-8	Binding head tapping screw 5X25	2				
089		265995-6	Binding head tapping screw 4X18	2			A2782	
089-1		266300-0	Binding head tapping screw 4X18	2	<	A2782		
090		631968-5	Controller	1				
091		638718-9	Lead unit	1				
092		450240-4	Lens	1				
093		233434-4	Compression spring 11	1				
094		266173-1	Binding head tapping screw 5X30	2				
095		346246-7	Plate	1				
096		451846-1	Handle base	1				
097		419783-5	Dust cover support	1				
098		424001-8	Dust cover	1				
099		868068-0	Name plate HM1111C	1			DE328	
099-1		858520-0	Name plate HM1111C	1	O	DE328		
100		266041-8	Binding head tapping screw 5X25	6				
101		451431-0	Handle retainer	1				
102		140409-5	Handle complete	1				
	C10	423379-6	Sponge sheet	1				
103		266029-8	Binding head tapping screw 5X65	1				
104		450352-3	Shoulder sleeve 6	1				
105		450896-3	Slide lever	1				
106		232209-8	Leaf spring	1				
107		450891-3	Lever stopper	1				
108		263027-3	Rubber pin 4	1				
109		654531-7	Terminal block	1				
110		651418-4	Switch ST115A-40	1			DB412	
110-1		651418-4	Switch ST115A-40	1	O	DB412		
111		687169-3	Strain relief	1				
112		265995-6	Binding head tapping screw 4X18	1				
113		682560-0	Cord guard 10	1				
114		692623-4	Power supply cord 1.5-2-4.0	1				
115		451841-1	Handle cover	1				
116		265995-6	Binding head tapping screw 4X18	1				
117		265439-6	Hex. head bolt M8X150	1				
118		417002-3	Side handle cam	1				
119		317282-0	Side handle base 68A	1				
120		951166-8	Spring pin 5-24	1				
121		317283-8	Side handle base 68B	1				
122		417003-1	Side handle	1				
123		417002-3	Side handle cam	1				
124		252640-2	Thumb nut M8	1				
125		151769-0	Side handle 68 complete	1				

Interchange
O : Yes
X : No
< : the new part can be substituted for the current.
> : the current part can be substituted for the new.
S : Interchangeable as a set.

SG	SINGAPORE
-----------	------------------

HM1111C / Demolition Hammer

Item	Sub	Parts No.	Parts Description	Qty	I/C	E/C No.	Close No.	Remark
	D10		INC. 119-121					
126		134890-0	Side handle 68 assembly	1				
	D10		INC. 117-124					
A01		A-80787	BULL POINT 280 SDS-MAX	1			DG655	
A02		194683-7	Grease vessel set	1				
A03		443122-7	Cloth	1			DW146	
A04		140561-9	Plastic case complete	1			DK941	
	C10	162271-8	Latch	2			DK941	
	C20	325637-5	Shaft	1			DK941	
	C30	450990-1	Handle	1			DK941	
	C40	837160-3	Sponge 40-65	1			DK941	
A04-1		140562-7	Plastic case complete	1	O	DK941		
	C10	162271-8	Latch	2		DK941		
	C20	325637-5	Shaft	1		DK941		
	C30	450990-1	Handle	1		DK941		
	C40	837160-3	Sponge 40-65	1		DK941		
A05		819925-5	Plastic case label HM1111C	2				
B01		195260-8	Hammer service kit	1		Y08476		
	C10	181490-7	Oil vessel set 30CC	1		Y08476	DS303	
	C11	1914C5-7	Grease set	1	O	DS303		
	D10		INC. 1,2,9,26,27,28,32,40,47			Y08476		
	D20		INC. 49,85			Y08476		
F03-1		199143-4	Dust extractor attachment set	1	<	C1783		
F04-1		199143-4	Dust extractor attachment set	1	<	C1783		
F06-1		199144-2	Dust extractor attachment set	1	<	C1783		
	C10	417765-1	Front cuff 22	1		C1783		
	C20	417766-9	Front cuff 38	1		C1783		
	C30	415021-3	Hose joint	1		C1783	E3595	
	C31	415021-3	Hose joint	1	O	E3595		
F07-1		199144-2	Dust extractor attachment set	1	<	C1783		
	C10	417765-1	Front cuff 22	1		C1783		
	C20	417766-9	Front cuff 38	1		C1783		
	C30	415021-3	Hose joint	1		C1783	E3595	
	C31	415021-3	Hose joint	1	O	E3595		
F27		1914C6-5	Grease set	1		DR335		

Interchange
 O : Yes
 X : No
 < : the new part can be substituted for the current.
 > : the current part can be substituted for the new.
 S : Interchangeable as a set.