



Cordless Chain Saw UC031G



Excellent combination of high efficiency and a lightweight design



Performance equal to or greater than

27cc-class chain saws



40Vmax Chain Saw series

Equivalent to 50cc-class chain saws

UC030G
(Captive nuts type)



Equivalent to 42cc-class chain saws

UC012G
*(Motor unit only)
(Captive nuts type)



UC014G/ UC015G

(Tool-less chain adjustment type)



Equivalent to 35cc-class chain saws

UC022G
(Tool-less chain adjustment type)

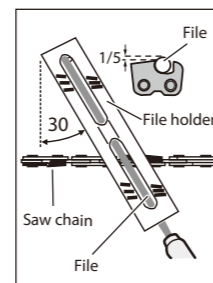


Accessories

File and File holder

The file holder guides sharpening at 30° and controls depth to 4/5 of the file diameter.

Size	Saw chain type	File		File and File holder Part No.
		Q'ty	Part No.	
4.0mm	80TXL	2	D-67359	D-70948
		12	D-67365	
4.5mm	90PX	2	D-67371	D-70954
		12	D-67387	



Flat file and File handle



Flat file		File handle	
Q'ty	Part No.	Q'ty	Part No.
1	D-67452	1	D-67496

File set in roll-up pouch

Round File(3pcs) / File Holder / Flat File / Handle(2pcs) / Depth Gauge set



Round file Size	Part No.
4.0mm	D-72154
4.8mm	D-72176

Chain oil



Capacity	Part No.
100ml	199897-3
1L	1910U0-9

Spike bumper set



Part No.
1917P5-6

Guide bar / Saw chain / Guide bar cover / File diameter / Drive sprocket



Cutter type:
MC: Micro chisel,
CC: Chamfer chisel

Drive sprocket



Guide bar			Saw chain					File diameter		Drive sprocket		
Bar length	Type	Part No.	No. of drive links	Gauge	Pitch	Cutter type	Type OREGON	Saw chain Part No.	1st half of top plate	2nd half of top plate	Pitch/ No. of teeth	Part No.
25cm/10"	Sprocket nose bar (Micro-Lite)	191T85-8	46	1.1mm/.043"	.325"	80TXL	MC	191T89-0	4.0mm	4.0mm	.325" / 7	1916N6-4
30cm/12"	Sprocket nose bar	191G15-1	46	1.1mm/.043"	3/8"	90PX	CC	191H01-8	4.5mm	4.0mm	3/8" / 6	1916N7-2

Charging Time

Battery Model	Capacity	Charging Time	
		DC40RA	DC40RC
BL4020 2.0Ah 191L29-0	2.0Ah	22 min	30 min
*1BL4025 2.5Ah 191B36-3	2.5Ah	28 min	38 min
*1BL4040/F 4.0Ah 1910N6-8 / 1917Y7-5	4.0Ah	45 min	67 min
BL4050F 5.0Ah 191L47-8	5.0Ah	50 min	85 min

*1 Recommended battery

Cordless Chain Saw

UC031G

Variable Speed	Chain type	80TXL / 90PX
Brake	Guide bar length	250, 300mm (10, 12")
Anti-restart function	Chain speed (at no load)	0 - 24.0 m/s
Automatic Oiling	Chain pitch	0.325 / 3/8
Chain Brake	Chain gauge	1.1 / 1.1 mm (0.043 / 0.043")
	Oil tank capacity	150 mL (5.1 oz)
	Dimensions (L x W x H)	295 x 188 x 203 mm (11-5/8 x 7-3/8 x 8")
	(Battery)	BL4025
	(Attachment)	w/o Guide bar, Saw chain
	Net weight	3.2 - 3.8 kg (7.1 - 8.4 lbs.)
	(Battery)	BL4025 - BL4050F
	(Attachment)	200 - 300mm guide bar, 80TXL saw chain, chain oil

Standard Equipment : Guide bar, Saw chain, Guide bar case, Wrench, Round file, Chain oil, Battery, Charger

The net weight value includes the lightest and heaviest combination of the attachment(s) and battery cartridge(s) which are specified in the instruction manual. Items of standard equipment and specifications may vary by country or area.

Makita Singapore Pte Ltd

7, Changi South Street 3, Singapore 486348
Phone : +65-6546-8700 Fax : +65-6546-8711
Email : msgproductteam@makita.com.sg
Website : www.makita.com.sg
Facebook : www.facebook.com/MakitaSG



MakitaSG



VISIT OUR WEBSITE

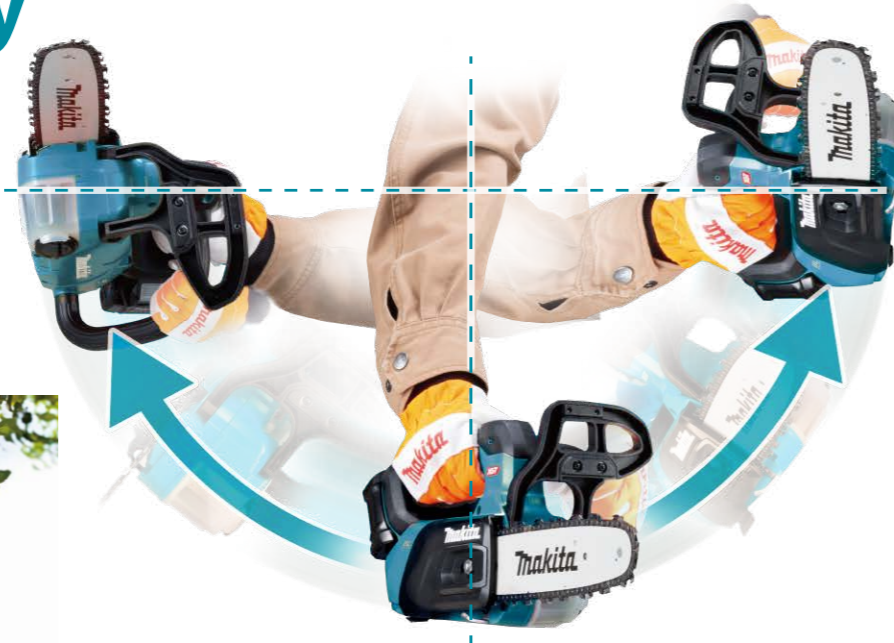


DOWNLOAD LEAFLET

PRINTED IN SINGAPORE

Excellent tool balance with optimal center of gravity

A shorter distance between the top handle and the center of gravity improves balance and reduces arm strain during horizontal cutting.



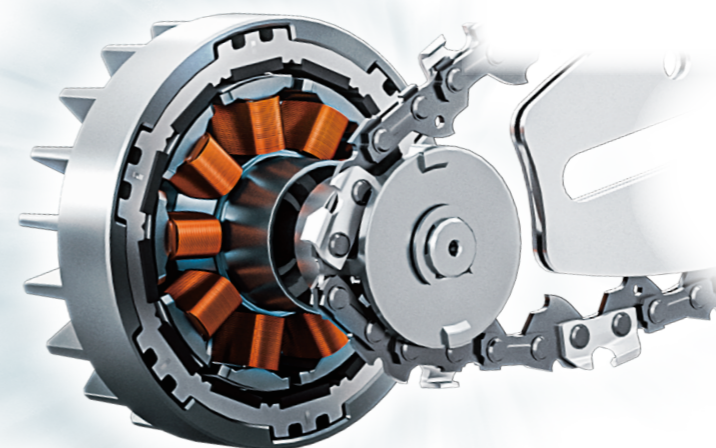
Lightweight
at **3.2 kg**

with BL4025, Guide bar 250mm
Saw Chain 80TXL

Work amount on a full
battery charge

Approx. **85 pcs**

With BL4025, 80TXL saw chain
Cutting 100 x 100 mm square cedar timber



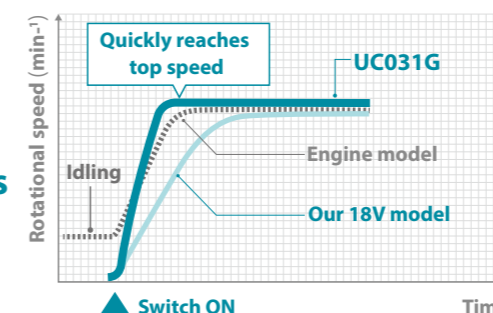
BL
MOTOR

High efficiency with
Outer-rotor brushless motor
and **Direct-drive system**

Excellent acceleration

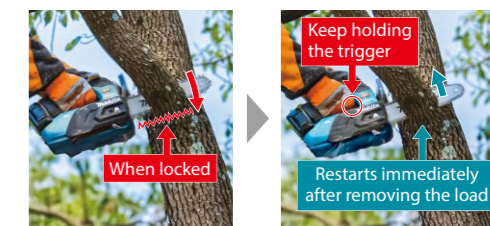
Enhanced trigger response provides fast acceleration, enabling efficient continuous and repetitive cutting tasks such as pruning.

Chain speed
24.0 m/s



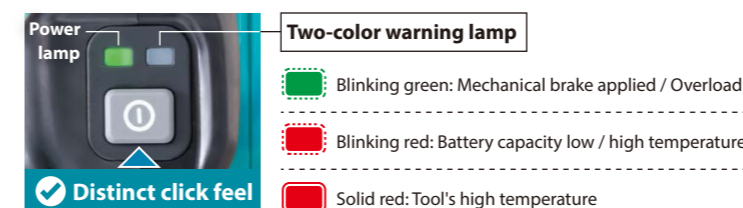
Excellent restartability (when locked)

If the tool locks due to load, removing the load immediately allows the motor to start again without retriggering, making it possible to resume cutting operations.



Main power button with enhanced operability

The button provides tactile feedback. The main power lamp and the two-color warning lamp clearly indicate power and error states.



Hook with quick attachment/detachment

Allows one-handed attachment to and removal from a carabiner or similar devices.



High water-resistance

IPX4 This tool is rated IPX4 for water resistance.

XPT High water-resistance compatible with eXtreme Protection Technology



■ Captive nuts

prevent loss of nut when removing sprocket cover to replace the guide bar or saw chain.

■ Adjustable automatic chain lubrication

■ Variable speed trigger

Allows for speed adjustments based on the material or application.

■ Chain oil level window

Allows the operator to easily check the oil level.