



SG

SINGAPORE

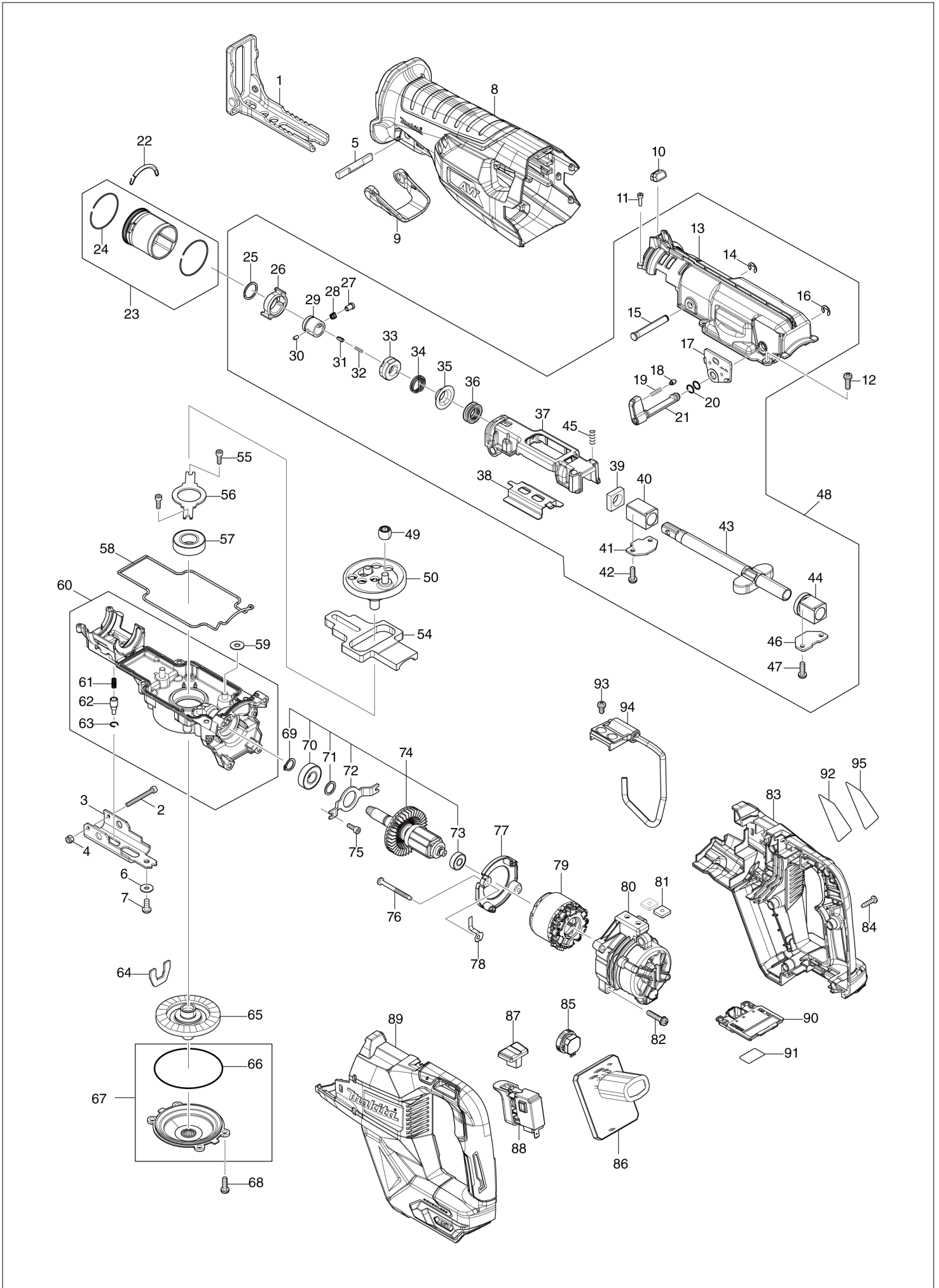
# Diagram / Parts List

JR002G

CORDLESS RECIPRO SAW



(SG) JR002G / CORDLESS RECIPRO SAW



SG

SINGAPORE

## JR002G / CORDLESS RECIPRO SAW

Item	Sub	Parts No.	Parts Description	Qty	I/C	E/C No.	Close No.	Remark
001		162B43-3	SHOE	1				
002		265A78-8	HEX SOCKET HEAD BOLT M4X40	1				
003		347972-1	SHOE GUIDE PLATE	1				
004		252126-6	HEX. LOCK NUT M4-7	1				
005		326599-0	LOCK PIN	1				
006		253194-2	FLAT WASHER 5	1				
007		266169-2	H.S. BUTTON HEAD BOLT M5X12	1				
008-1		422962-6	INSULATION COVER	1				
009		413F39-4	LOCK LEVER	1				
010		620H78-1	LED CIRCUIT	1				
011		265910-0	HEX. SOCKET HEAD BOLT M3X12	2				
012		911225-0	PAN HEAD SCREW M5X16	4				
013-1		1410F6-2	GEAR HOUSING COVER COMPLETE	1				
	C10	422867-0	SEAL PLATE	1				
014		961012-7	STOP RING E-6	1				
015		268012-1	PIN 7	1				
016		961012-7	STOP RING E-6	1				
017		413F41-7	PLATE C	1				
018		413F45-9	PIN 5	1				
019		232745-4	COMPRESSION SPRING 3	1				
020		213021-5	O RING 5	2				
021		271471-0	LEVER 24	1				
022		232583-4	TENSION SPRING 3	1				
023		136707-3	RELEASE DRUM ASS'Y	1				
	D10		INC. 24					
024		232746-2	RING SPRING 39	2				
025		257430-8	RETAINING RING(EXT)18	1				
026		313418-9	DRIVING SLEEVE	1			DX090	
026-1		313646-6	DRIVING SLEEVE	1	<	DX090		
027		256569-4	SHOULDER PIN 5	1				
028		234381-2	COMPRESSION SPRING 6	1				
029		327650-9	GUIDE SLEEVE	1				
030		256A11-1	PIN 3	1				
031		310912-2	PUSH PIN	1				
032		232472-3	COMPRESSION SPRING 2	1				
033		413F43-3	CONNECTING SLEEVE	1				
034		233594-2	TORSION SPRING 17	1				
035		257742-9	SHOULDER SLEEVE 14	1				
036		213174-0	X RING 14	1				
037		141H95-3	SLIDER SUPPORT COMPLETE	1				
038		347973-9	SLIDE PLATE	1				
039		423343-7	SEAL PLATE 14	1				
040		214212-1	PLANE BEARING 14A	1				
041		345485-6	PLATE A	1				
042		911225-0	PAN HEAD SCREW M5X16	2				
043		162B44-1	SLIDER	1				
044		141H97-9	BEARING COMPLETE	1				
045		233038-2	COMPRESSION SPRING 5	2				
046		345486-4	PLATE B	1				
047		911225-0	PAN HEAD SCREW M5X16	2				
048-1		137136-3	GEAR HOUSING COVER ASS'Y	1			DX090	
	D10		INC. 13-21,25-47				DX090	
048-2		137249-0	GEAR HOUSING COVER ASS'Y	1	<	DX090		
	D10		INC. 13-21,25-47			DX090		
049		212957-5	NEEDLE BEARING 710	1				
050		136712-0	CRANK CAM ASS'Y	1				
054		313419-7	COUNTER WEIGHT	1				
055		922117-8	HEX. SOCKET HEAD BOLT M4X12	2				
056		285051-6	BEARING RETAINER 80	1				
057		211251-2	BALL BEARING 6003LLB	1				
058		422868-8	SEAL RING	1				
059		253804-1	FLAT WASHER 6	3				
060		136676-8	GEAR HOUSING ASS'Y	1				
	D10		INC. 61-63					
061		234084-8	COMPRESSION SPRING 3	1				

A:  
B:  
C:

Interchange

O : Yes

X : No

&lt; : the new part can be substituted for the current.

&gt; : the current part can be substituted for the new.

S : Interchangeable as a set.

SG

SINGAPORE

## JR002G / CORDLESS RECIPRO SAW

Item	Sub	Parts No.	Parts Description	Qty	I/C	E/C No.	Close No.	Remark
062		256A09-8	SHOULDER PIN 8	1				
063		232335-3	RING SPRING 8	1				
064		347974-7	PLATE D	1				
065		141H94-5	TORQUE LIMITER COMPLETE	1				
066		213726-7	O RING 62	1				
067		136708-1	BEARING BOX ASS'Y	1				
	D10		INC. 66					
068		911225-0	PAN HEAD SCREW M5X16	4				
069		961052-5	RETAINING RING (EXT) S-12	1				
070		211131-2	BALL BEARING 6001DDW	1				
071		267104-3	FLAT WASHER 12	1				
072		285050-8	BEARING RETAINER 69	1				
073		210062-2	BALL BEARING 607ZZ	1				
074		519728-4	ROTOR ASS'Y	1				
	D10		INC. 69-73					
075		922117-8	HEX. SOCKET HEAD BOLT M4X12	2				
076		266425-0	TAPPING SCREW 4X45	2				
077		413F42-5	BAFFLE PLATE	1				
078-1		654890-9	EARTH PLATE	1				
079-1		629B69-3	STATOR	1				
080		413F14-0	MOTOR HOUSING	1				
081		264002-2	SQUARE NUT M5	2				
082		911243-8	PAN HEAD SCREW M5X25	4				
083		183V99-3	HANDLE SET	1				
	C10	263002-9	RUBBER PIN 4	4				
	C20	263005-3	RUBBER PIN 6	4				
	C30	8005T5-8	XGT LOGO LABEL	1				
	D10		INC. 89					
084		266326-2	TAPPING SCREW 4X18	6				
085		620H79-9	DIAL CIRCUIT	1				
086		620H77-3	CONTROLLER	1				
087		413F44-1	LOCK OFF BUTTON	1				
088		651439-6	SWITCH C3JR-4B-2	1				
089		183V99-3	HANDLE SET	1				
	C10	263002-9	RUBBER PIN 4	4				
	C20	263005-3	RUBBER PIN 6	4				
	C30	8005T5-8	XGT LOGO LABEL	1				
	D10		INC. 83					
090		632R99-1	TERMINAL UNIT	1				
091		8116Y8-8	JR002G SERIAL NO. LABEL	1				
092		8116Y1-2	JR002G NAME PLATE	1				
093		911206-4	PAN HEAD SCREW M5X10	2				
094		122B85-9	HOOK ASSEMBLY	1				
096		620N49-4	CONTROLLER B	1				
097		638A34-5	LEAD UNIT	1				
098		652119-7	PAN HEAD SCREW M2X6	6				
A02B		821872-8	PLASTIC CASE	1				
	C10	162271-8	LATCH	2				
A02C		821872-8	PLASTIC CASE	1				
	C10	162271-8	LATCH	2				
A03B		8049V3-2	JR002GD201 PLASTIC CASE LABEL	2				
A04B		***DC40RA	DC40RA FAST CHARGER	1				
	D10		COMPO-PARTS					
A04C		***DC40RA	DC40RA FAST CHARGER	1				
	D10		COMPO-PARTS					
A05B		191B36-3	BATTERY BL4025 SET	2				
A05C		191B26-6	BATTERY BL4040 SET	2				
A06B		412393-7	BATTERY COVER	1				
A06C		412393-7	BATTERY COVER	2				
A08		B-05038	RECIPRO SAW BLADE FOR METAL	1				
A09		B-05044	RECIPRO SAW BLADE FOR PLYWOOD	1				
A10		B-05153	RECIPRO SAW BLADE FOR WOOD	1				

A:  
B:  
C:

Interchange

O : Yes

X : No

&lt; : the new part can be substituted for the current.

&gt; : the current part can be substituted for the new.

S : Interchangeable as a set.