



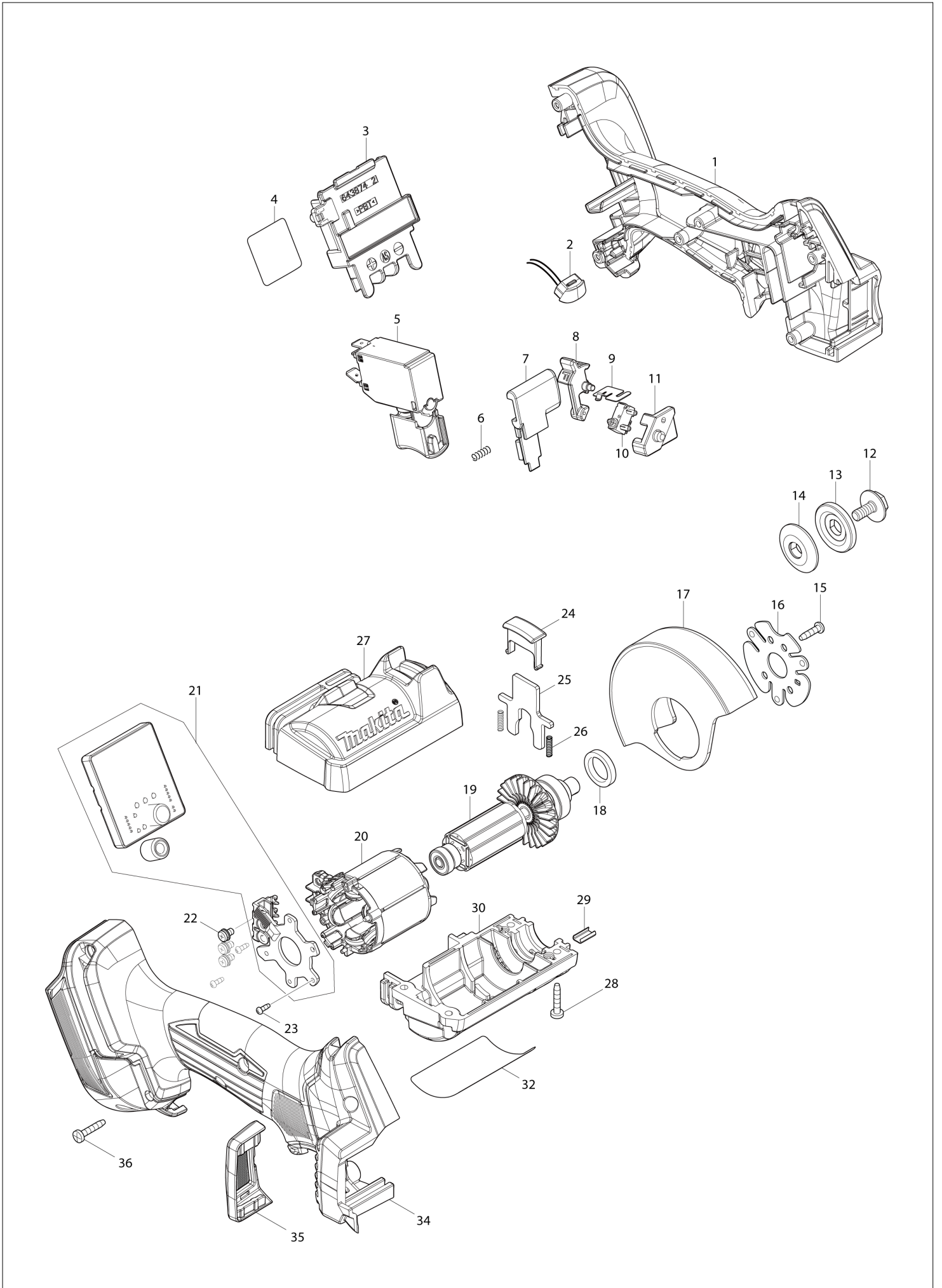
Diagram / Parts List

DMC300

76MM CORDLESS COMPACT CUT OFF



(QA) DMC300 / 76MM CORDLESS COMPACT CUT OFF



QA**DMC300 / 76MM CORDLESS COMPACT CUT OFF**

Item	Sub	Parts No.	Parts Description	Qty	I/C	E/C No.	Close No.	Remark
001		183V87-0	HANDLE SET	1				
	D10		INC. 34					
002		620549-0	LED CIRCUIT	1				
003		643874-2	TERMINAL	1				
004		8119H1-1	DMC300 SERIAL NO. LABEL	1				
005		650027-6	SWITCH C3JW-4CM-R	1				
006		231433-0	COMPRESSION SPRING 4	1				
007		413F56-4	LOCK OFF BUTTON	1				
008		413F52-2	F/R CHANGE LEVER	1				
009		232747-0	LEAF SPRING	1				
010		632T84-6	SWITCH UNIT	1				
011		413F55-6	SWITCH BASE	1				
012		265C51-0	HEX. SOCKET HEAD BOLT M5X12	1				
013		224624-0	OUTER FLANGE 25	1				
014		224623-2	INNER FLANGE 25	1				
015		266556-5	TAPPING SCREW 3X12	4				
016		347979-7	PLATE A	1				
017		162B46-7	WHEEL COVER 76	1				
018		422870-1	FELT RING 18	1				
019		619755-2	ROTOR	1				
020		629B23-7	STATOR	1				
021		620J17-3	CONTROLLER	1				
022		652069-6	FLAT HEAD SCREW M3X6	3				
023		266490-9	TAPPING SCREW PT 2X6	3				
024		413F51-4	CAP	1				
025		347978-9	SHAFT LOCK	1				
026		232472-3	COMPRESSION SPRING 2	2				
027		183X33-5	MOTOR HOUSING SET	1				
	D10		INC. 30					
028		266429-2	TAPPING SCREW 3X16	4				
029		347980-2	PLATE B	1				
030		183X33-5	MOTOR HOUSING SET	1				
	D10		INC. 27					
032		8119G4-8	DMC300 NAME PLATE	1				
034		183V87-0	HANDLE SET	1				
	D10		INC. 1					
035		422880-8	DUST COVER	1				
036		266429-2	TAPPING SCREW 3X16	6				
A01		122C54-6	DUST COLLECT COVER ATTACHMENT	1				
	C10	265760-3	THUMB SCREW M5X10	1				
	C20	267010-2	FLAT WASHER 5	1				
	C30	413F54-8	CLEAR COVER	1				
	C40	265C71-4	TAPPING SCREW 3X6	2				
A02		D-77263	DIAMOND WHEEL 76X10 MM RIM	1			DP811	
A02-1		D-77263	DIAMOND WHEEL 76X10 MM RIM	1	O	DP811		
A03		D-74837	TUNGSTEN CARBIDE GRIT 76X10MM	1			DW527	
A03-1		D-78374	TUNGSTEN CARBIDE GRIT BLADE	1	O	DW527		
A04		D-74815	CUTTING WHEEL/THIN THICKNESS	1				
A05		783202-0	HEX. WRENCH 4	1				
A06B		450128-8	BATTERY COVER	1				
A07B		***DC18RC	DC18RC FAST CHARGER	1				
	D10		COMPO-PARTS					
A08B		197280-8	BATTERY BL1850B SET	2				
A11B		821550-0	CONNECTOR PLASTIC CASE (TYPE2)	1				
	C10	453974-8	LATCH	4				
A12B		8354E7-4	INNER TRAY	1				

A:DMC300Z(N)
B:DMC300RTJ(H)Interchange
O : Yes
X : No
< : the new part can be substituted for the current.
> : the current part can be substituted for the new.
S : interchangeable as a set.