



Cordless Crimper DTC301



Capable of crimping terminals onto large-diameter electric wires

Ram stroke length		31 mm
Crimping capacity	Cu	ø19.5mm 300 mm ²
	Al	ø19.5mm 300 mm ²

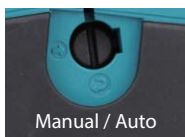
Crimping head

The head rotates 270 degrees, making it easy to use in a variety of orientations.



Auto retract function

- The ram automatically retracts to its original position after completing the crimping operation, enhancing work efficiency.
- The On/Off setting of the auto retract function can be switched by turning the screw.



LED job light

Single LED with afterglow function



Release knob

To retract the ram manually, press the release knob.

Die release knob

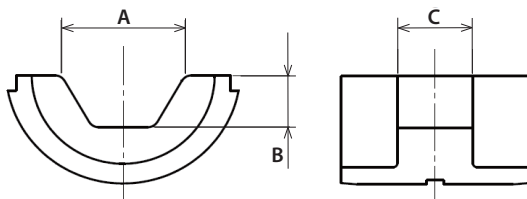
Die release pin



Accessories

Hex. Die

Hexagonal (U-type) dies to crimp copper and aluminum terminals with the 12-ton crimper (Compatible with DIN46235)



Die No.	Range (mm ²)	A (mm)	B (mm)	C (mm)	Part No.
K6	Cu 10	6.2	2.2	12	ZM00000216
K8	Cu 16	8.2	3.0	12	ZM00000217
K10	Cu 25 / Al 16	9.7	3.6	12	ZM00000218
K12	Cu 35 / Al 25	11.8	4.4	14	ZM00000219
K14	Cu 50 / Al 35	13.8	5.3	14	ZM00000220
K16	Cu 70 / Al 50	15.8	6.0	14	ZM00000221
K18	Cu 95 / Al 70	18	7.0	14	ZM00000222
K20	Cu 120 / Al 95	19.8	7.6	14	ZM00000223
K22	Cu 150 / Al 120	22.3	8.7	13	ZM00000224
K25	Cu 185 / Al 150	24.3	9.6	12	ZM00000225
K28	Cu 240 / Al 185	27.8	11.5	11	ZM00000226
K32	Cu 300 / Al 240	31.5	13.6	9	ZM00000227

Shoulder belt

Part No.
162523-7



Charging Time

	Fast Charging	
	DC18RC	DC18SD
BL1815N 1.5Ah 196449-1	15 min	30 min
BL1820B 2.0Ah 197254-9	24 min	45 min
BL1830B 3.0Ah 197599-5	22 min	60 min
BL1850B 5.0Ah 197280-8	45 min	110 min
BL1860B 6.0Ah 197422-4	55 min	130 min

Cordless Crimper

DTC301

Built-in Job Light	Output force	120 kN
	Ram stroke length	31 mm (1-1/4")
Crimping capacity	Cu: ø19.5(300mm ²)	
	Al: ø19.5(300mm ²)	
Dimensions (L x W x H)	415 x 92 x 346 mm	
	(16-3/8 x 3-5/8 x 13-5/8")	
Dimensions (Battery)	BL1860B	
Net weight	6.8 - 7.1 kg (15.0 - 15.7 lbs.)	
Net weight (Battery)	BL1815N - BL1860B	

The weight may differ depending on the attachment(s), including the battery cartridge.
Items of standard equipment and specifications may vary by country or area.

Makita Singapore Pte Ltd

7, Changi South Street 3, Singapore 486348
Phone : +65-6546-8700 Fax : +65-6546-8711
Email : msgproductteam@makita.com.sg
Website : www.makita.com.sg
Facebook : www.facebook.com/MakitaSG



VISIT OUR WEBSITE



DOWNLOAD LEAFLET

PRINTED IN SINGAPORE