

■ Combination Hammer and Rotary Hammer with Dust collection system series



photo: HR008G+DX10

Powered	Model	Dust collection system	Capacity
40V max	HR008G	DX10	30mm
	HR009G	DX11	
	HR001G/ HR003G	DX12	28mm
	HR002G/ HR004G	DX14	
	HR007G	DX15	
18V x2	HR010G	DX16	20mm
	DHR280/ DHR282	DX08	28mm
	DHR281/ DHR283	DX09	
18V	DHR242	DX06	24mm
	DHR243	DX07	18mm
	DHR183	DX16	
AC	HR3011FC	DX10	30mm
	HR3012FC	DX11	26mm
	HR2652/ HR2653 HR2653T/ HR2663	DX15	

■ Accessories

Dust collection system

DX16



Sealing cap
5 pcs/set
Part no. 422992-7

Tool hanger set

Part no. 1911K0-5



Wireless unit (WUT01)

HR010G only
Part no. 199393-1



Wireless unit adaptor (WUT02)

HR010G only
Part no. 199999-5



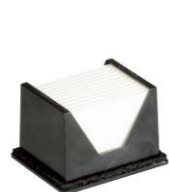
Dust case set

Part no. 1911P5-0



HEPA Filter set

Part no. 199596-7



Dust cup set

For drilling
Part no. 1911P8-4



Bellows B

For chipping / chiseling
Part no. 413N62-7



■ Charging Time

HR010G

Battery Model	Fast Charging	
	DC40RA	DC40RC
*BL4020 2.0Ah 191L29-0	22 min	30 min
*BL4025 2.5Ah 191B36-3	28 min	38 min
*BL4040 4.0Ah 191B26-6	45 min	67 min
BL4050F 5.0Ah 191L47-8	50 min	85 min
BL4080F 8.0Ah 191X65-8	76 min	170 min

*1 Recommended battery

DHR183

Battery Model	Fast Charging	
	DC18RC	DC18SD
BL1815N 1.5Ah 196449-1	15 min	30 min
BL1820B 2.0Ah 197254-9	24 min	45 min
BL1830B 3.0Ah 197599-5	22 min	60 min
BL1850B 5.0Ah 197280-8	45 min	110 min
BL1860B 6.0Ah 197422-4	55 min	130 min

Cordless Combination Hammer **HR010G** 20 mm(13/16") Adapted for SDS-PLUS bits

Cordless Rotary Hammer **DHR183** 18 mm (11/16") Adapted for SDS-PLUS bits

- Variable Speed
- Brake
- Reversing
- Anti-restart function
- Torque Limiter
- Constant Speed
- Dust Collection
- Built-in Job Light
- Adapted for SDS-PLUS bits

	HR010G	DHR183
Impact energy	EPTA-Procedure 05/2009: 2.1 J	EPTA-Procedure 05/2009: 1.7 J
Capacity	Concrete (w/ TCT bit): 20 mm (13/16") Steel: 13 mm (1/2") Wood: 26 mm (1") Core bit: 35 mm (1-3/8") Diamond core bit: 32 mm (1-1/4")	Concrete: 18 mm (11/16") Steel: 13 mm (1/2") Wood: 24 mm (15/16")
Blows per minute (BPM)	0 - 5,000	0 - 5,000
No load speed (RPM)	0 - 1,350	0 - 1,100
Sound pressure level	90 dB(A)	90 dB(A)
Sound power level	101 dB(A)	101 dB(A)
Vibration level	Hammer drilling into concrete: 10.0 m/s ²	Hammer drilling into concrete: 7.5 m/s ²
Dimensions (L x W x H)	w/ BL4020 / BL4025: 289 x 93 x 217 mm (11-3/8 x 3-5/8 x 8-1/2")	w/ BL1830B / BL1840B / BL1850B / BL1860B: 288 x 89 x 215 mm (11-3/8 x 3-1/2 x 8-1/2")
Net weight	2.8 - 4.5 kg (6.2 - 9.9 lbs.)	2.1 - 2.9 kg (4.6 - 6.4 lbs.)

Standard Equipment: Dust cup (country-specific) (DHR183 only), Side grip, Depth gauge, Battery, Charger

The weight may differ depending on the attachment(s), including the battery cartridge. The lightest and heaviest combination, according to EPTA-Procedure 01/2014, are shown in the table. Items of standard equipment and specifications may vary by country or area.



Cordless Combination Hammer
HR010G 20 mm (13/16")

Cordless Rotary Hammer
DHR183 18 mm (11/16")

Dust collection system
DX16



Adapted for
SDS-PLUS bits



HR010G



3 mode

- Rotation
- Rotation + Hammering
- Hammering

DHR183



2 mode

- Rotation
- Rotation + Hammering

Cordless Combination Hammer (3 mode)

HR010G

Capacity
Concrete: 20 mm



Cordless Rotary Hammer (2 mode)

DHR183

Capacity
Concrete: 18 mm



Dust collection system

DX16 (option)

Max bit Capacity
Dia. 20mm
Length 165mm



HEPA filter



HR010G only

Makita Singapore Pte Ltd

7, Changi South Street 3, Singapore 486348
Phone : +65-6546-8700 Fax : +65-6546-8711
Email : msgproductteam@makita.com.sg
Website : www.makita.com.sg
Facebook : www.facebook.com/MakitaSG



VISIT OUR WEBSITE



DOWNLOAD LEAFLET

PRINTED IN SINGAPORE

HR010G / DHR183



Compact and lightweight design



photo: HR010G

Dust collection system DX16 (option)

Compact and lightweight design

Max. attachable bit size

Diameter: 20mm
Length: 165mm
Effective length: 105mm



Dimensions(L x W x H)

Tool body with Side grip

HR010G + DX16
Battery: BL4025
422 x 136 x 217 mm

DHR183 + DX16
Battery: BL1860B
416 x 134 x 215 mm



Lightweight

HR010G battery: BL4025	DHR183 battery: BL1860B
3.6 kg	3.2 kg
Tool body with Side grip	

Filter cleaning mechanism



One-touch easy attachment/removal



HEPA filter

Equipped with HEPA Filter

having a high particle capture rate, which is also used for home appliance vacuum cleaners.



AVT Anti-Vibration Technology

Low vibration

HR010G: **10.0 m/s²**
DHR183: **7.5 m/s²**

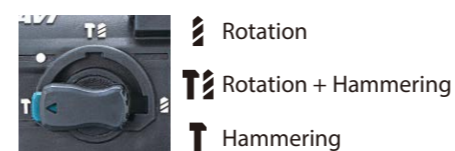
Measuring point: at Side grip

Test conditions

- Downward drilling, Depth: 80mm
- Drill diameter: ø10.0mm
- Concrete compressive strength: 40N/mm² (According to IEC62841-2-6.)

3 operation modes

HR010G only



AWS

HR010G only

Auto-start Wireless System

connects to compatible vacuum cleaner with Bluetooth. The vacuum cleaner automatically runs while the switch is on.



Wireless unit



Switch on the tool



Vacuum cleaner is activated

XPT

eXtreme Protection Technology



LED joblight

