

Model		DRV150 / DRV250				DRV250			
Rivet	Size	Ø2.4 (3/32")	Ø3.2 (1/8")	Ø4.0 (5/32")	Ø4.8 (3/16")	Ø4.0 (5/32")	Ø4.8 (3/16")	Ø6.0 (3/16")	Ø6.4 (3/16")
	Mandrel diameter: mm	Ø1.4-1.6	Ø1.8-2.1	Ø2.2-2.6	Ø2.6-3.2	Ø2.2-2.6	Ø2.6-3.2	Ø3.1-3.5	Ø3.5-3.9
Jaw set ( 3pcs set )	Size	4.8				6.4			
	Part No.	199731-7				199730-9			
Nose piece assy		127230-9	127229-4	127228-6	127225-2	127228-6	127225-2	127224-4	127223-6
Jaw pusher assy	Color / Size	Gray / 1.9	Black / 2.5	Gray / 3.1	Black / 3.6	Gray / 3.1	Black / 3.6	Gray / 4.0	Black / 4.5
	Part No.	127478-3	127477-5	127476-7	127475-9	127476-7	127475-9	127474-1	127473-3
Pipe	Color / Size	Silver / 2.3	Black / 2.8	Pipe is not necessary for operation. (DRV150)		Silver / 3.5	Silver / 4.2		Silver / 4.6
	Part No.	162747-5	162746-7			162745-9	162744-1		162743-3

Tool Protector

	For Nose	For Motor	Set
DRV150	422572-9	422571-1	191G65-6
DRV250	422573-7		191G66-4



Battery Protector

BL1830B / BL1850B /  
BL1860B  
459938-0



Grease set (5g)

Jaw grease for maintenance  
(Grease to jaw case & jaws)  
Molybdenum disulfide grease  
191D57-7



Hook

281012-4



	DC18RC	DC18RD	DC18SD
BL1830B 3.0Ah	22 min		60 min
BL1850B 5.0Ah	45 min		110 min
BL1860B 6.0Ah	55 min		130 min

Cordless Rivet Gun  
DRV150 / DRV250

	DRV150	DRV250
Brake	Max pulling force 10 kN	20 kN
Length of Stroke	25 mm (1")	30 mm (1-3/16")
Center height	26 mm (1")	26 mm (1")
Sound Pressure Level	75 dB(A)	74 dB(A)
Vibration Level	2.5 m/s <sup>2</sup> or less	2.5 m/s <sup>2</sup> or less
Dimensions (L x W x H)	w/ BL1830B / BL1850B / BL1860B: 310x80x287 mm (12-1/4"x3-1/8"x1-1/4")	w/ BL1830B / BL1850B / BL1860B: 320x80x287 mm (12-5/8"x3-1/8"x1-1/4")
Net weight	1.9 - 2.2 kg (4.2 - 4.9 lbs.)	2.1 - 2.4 kg (4.6 - 5.3 lbs.)

Standard Equipment : DRV150: Belt Clip, Battery, Charger, Accessory set for 2.4, 3.2, 4.0A, Grease set  
DRV250: Belt Clip, Battery, Charger, Accessory set for 4.8B, 6.0, Grease set

The weight may differ depending on the attachment(s), including the battery cartridge. The lightest and heaviest combination, according to EPTA-Procedure 01/2014, are shown in the table.  
Items of standard equipment and specifications may vary by country or area.

Makita Singapore Pte Ltd

7, Changi South Street 3, Singapore 486348  
Phone : +65-6546-8700 Fax : +65-6546-8711  
Email : msgproductteam@makita.com.sg  
Website : www.makita.com.sg  
Facebook : www.facebook.com/MakitaSG



MakitaSG



VISIT OUR WEBSITE



DOWNLOAD LEAFLET

PRINTED IN SINGAPORE



Cordless Rivet Gun  
DRV150 / DRV250

Satisfy Professional's Needs



Easy plate joint



DRV150

[Compatible rivet diameter]  
Ø2.4mm / 3.2mm /  
4.0mm / 4.8mm



DRV250

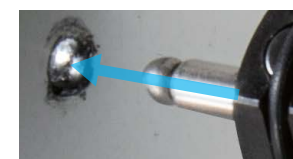
[Compatible rivet diameter]  
Ø4.8mm / 6.0mm / 6.4mm  
  
Ø2.4mm / 3.2mm / 4.0mm  
(use with optional Nose piece, Jaw  
pusher and pipe)







# High speed riveting as same as pneumatic tools.



Insert rivet into the hole.



Pull trigger to tighten the rivet.



## Jaw case designed to enable tight space operation

The short center height allows for tight space operation such as close-to-wall riveting.

Center height

26 mm



## Rivet holding mechanism



- Once a rivet is installed, it is held in place and do not drop out even when the tool is directed downward.
- No need for holding the rivet by hand even in vertical down application

## Twin LED job light

With pre-glow and afterglow functions



## Compatible with various sizes of blind rivets

A wide range of nose pieces and jaw pushers allow for tightening various sizes of blind rivets.

### DRV150

[Compatible rivet diameter]

Ø2.4mm / 3.2mm / 4.0mm / 4.8mm

### DRV250

[Compatible rivet diameter]

Ø4.8mm / 6.0mm / 6.4mm  
Ø2.4mm / 3.2mm / 4.0mm  
(use with optional Nose piece, Jaw pusher and pipe)



## Transparent container for spent mandrels\*

The amount of spent mandrels\* can be checked.  
\* mandrel shaft broken off from a tightened rivet



Work amount on a full battery charge (approx)

**2,300 rivets**

Model: DRV150  
Mandrel diameter: Ø4.8mm  
Battery: BL1850B ( 5.0Ah )

DRV250 : 2,000 rivets ( 5.0Ah )

**BL MOTOR XPT**