



Cordless Vacuum Cleaner VC006GM

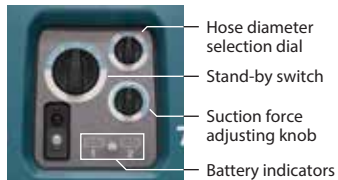


40V^{Li-ion}max + **40V^{Li-ion}max**



VC006GM

Dust type: Dry: 40L / Wet: 30L
Approval for dust class: M



Dust class M approved

With water drain



Large rear wheels



Continuous use

Battery: BL4050F x2

[at dial Min]

80 min.

[at dial Max]

25 min.

Max air flow

Hose size:
ø38mm x 2.5m

3.7 m³/min.

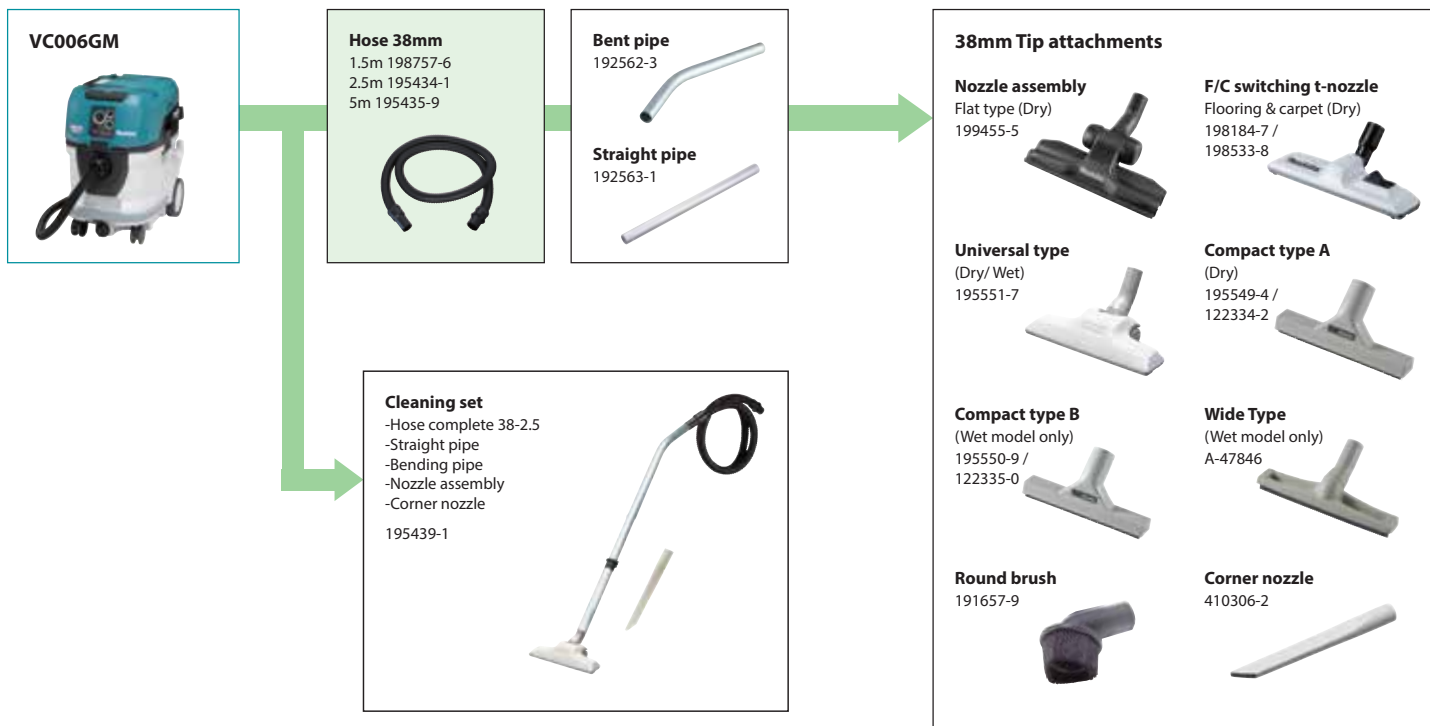
Hose size:
ø28mm x 3.5m

2.0 m³/min.



Accessories

System charts



Powder filter M set

Part No. 1911B6-0



Powder filter H set

Part No. 1911B7-8

HEPA filter with high efficiency in capturing dust and capability of capturing fine airborne dust.



Damper set

Part No. 1911B4-4

During automatic self-cleaning, this part pushes Pre-filter back to remove the dust adhering to the filter.



Pre filter set

Part No. 1911B5-2

A component part of Filter, which is made of material that allows for easy dust removal.



Filter for water set

Part No. 1910N0-0

This is a special filter designed for water suction applications. It uses a material that allows water to easily pass when a large amount of water is suctioned repeatedly.



Filter bag set (5 pcs)

Part No. 1910Y4-9

35 L
With shutter of non-woven fabric



Poly bag set (10 pcs)

Part No. 1910R3-2



Charging Time

	Fast Charging			
	DC40RA	DC40RB	DC40RC	DC40WA
*1BL4020 2.0Ah 191L29-0				
	22 min	30 min	110 min	
*1BL4025 2.5Ah 191B36-3				
	28 min	38 min	130 min	
*1BL4040 4.0Ah 191B26-6				
	45 min	67 min	210 min	
*1BL4050F 5.0Ah 191L47-8				
	50 min	85 min	260 min	
*1BL4080F 8.0Ah 191X65-8				
	76 min	170 min	420 min	

*1 Recommended battery

Cordless Vacuum Cleaner

VC006GM

- Variable Speed
- Revolving Hose
- Static Free Zone

Capacity	Dust / Water: 40 / 30 L
Max air flow	w/ Hose 28-3.5: 2.0 m ³ /min w/ Hose 38-2.5: 3.7 m ³ /min
Max sealed suction	18 kPa
Vibration level	2.5 m/s ² or less
Sound pressure level	70 dB(A) or less
Dimensions (L x W x H)	586 x 385 x 598 mm (23 x 15-1/8 x 23-1/2")
Net weight	18.4 - 20.8 kg (40.6 - 45.9 lbs.)

Standard Equipment: Floor nozzle, Straight pipe, Bent pipe, Hose, Dust bag, Corner nozzle, Front cuffs (22, 24), Wireless unit, Cap, Joint, Battery, Charger

The weight does not include accessories but battery cartridge(s). The lightest and heaviest combinations weight of the appliance and battery cartridge(s) are shown in the table. Items of standard equipment and specifications may vary by country or area.

Makita Singapore Pte Ltd

7, Changi South Street 3, Singapore 486348
Phone : +65-6546-8700 Fax : +65-6546-8711
Email : msgproductteam@makita.com.sg
Website : www.makita.com.sg
Facebook : www.facebook.com/MakitaSG



VISIT OUR WEBSITE



DOWNLOAD LEAFLET

PRINTED IN SINGAPORE