

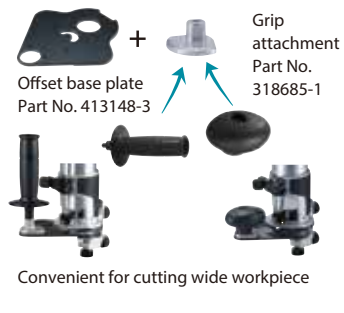
**Accessories**

**Easy-to-Customize**

**Trimmer base assembly with Square base plate**



**Offset base plate with Grip attachment & Grip**



**Plunge base assembly with Side grip**



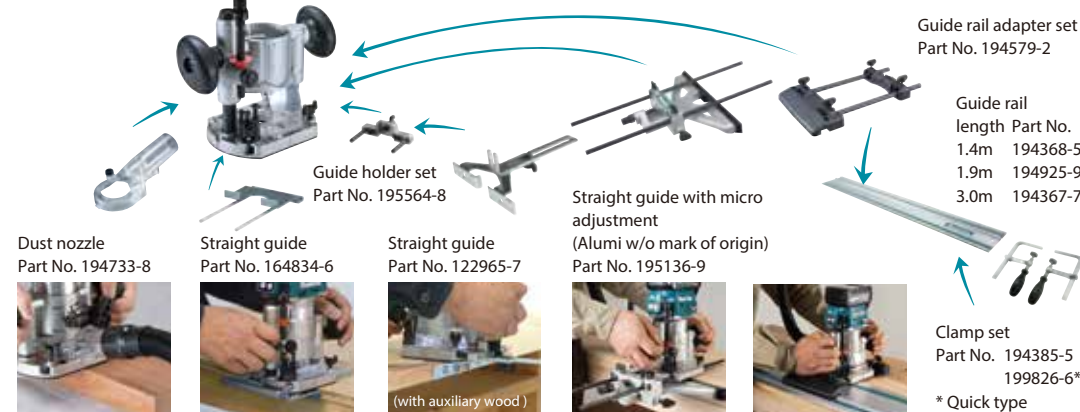
**Trimmer base with Grip attachment set**



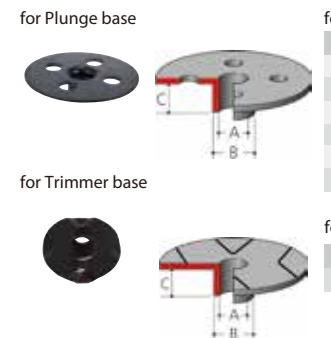
**Trimmer base assembly with Straight guide & Trimmer guide assembly**



**Plunge base assembly with Dust nozzle, Straight guide, Guide rail adapter set, Guide rail & Clamp set**



**Templet guide**



**Base plate**



**Collet cone**



**Charging Time**

Battery Model	DC40RA	DC40RC
*BL4020 2.0Ah 191L29-0	22 min	30 min
*BL4025 2.5Ah 191B36-3	28 min	38 min
*BL4040 4.0Ah 191B26-6	45 min	67 min

**Cordless Trimmer RT001G 6 mm (1/4"), 8 mm (3/8")**

Variable Speed	Collet Size 6/8 mm (1/4/ 3/8")
Brake	No Load Speed (RPM) 110,000 - 31,000
Constant Speed	Plunge Capacity w/ Trimmer Base: 0 - 40 mm (0 - 1-9/16") w/ Plunge Base: 0 - 35 mm (0 - 1-3/8")
Soft Start	Vibration Level Rotation without Load: 2.5 m/s <sup>2</sup> or less
Dust Collection	Sound Pressure Level 81 dB(A)
Built-in Job Light	Sound Power Level 92 dB(A)
	Dimensions (L x W x H) w/ BL4020 / BL4025: 126 x 89 x 245 mm (5 x 3-1/2 x 9-5/8") w/ BL4040: 141 x 89 x 251 mm (5-9/16 x 3-1/2 x 9-7/8")
	Net weight 2.2 - 2.5 kg (4.9 - 5.5 lbs.)

**Standard Equipment:** Collet Cone, Trimmer Base Assembly, Straight Guide, Wrench, Dust nozzle, Battery, Charger  
**Country-specific:** Templet Guide, Trimmer Guide, Tilt Base Assembly, Offset Base Assembly, Plunge Base Assembly, Grip attachment, Side grip, Straight bit

The weight may differ depending on the attachment(s), including the battery cartridge. The lightest and heaviest combination, according to EPTA-Procedure 01/2014, are shown in the table. Items of standard equipment and specifications may vary by country or area.



**High Speed trimming 35%\* UP**



\*Compared to predecessor model  
Cut a 1m long groove in Melapi at a depth of 6mm using ø6mm straight bit.





## BL MOTOR

BL motor delivers the power and performance for corded demands

### Push button switch

Lock/unlock button  
On/off switch button

### Variable speed control by dial

### High durability and accuracy obtained by using aluminum for body housing

### Shaft lock

Flat-top design and provides stability for easier bit change.



### Twin LED job lights

illuminate cutting edge and increase visibility



### Collet size

Accepts 6mm & 8mm collets, 1/4" collet.



### Soft start

minimizes start-up shock and makes the tool start smoothly

## with Trimmer base

Round base for smooth and fast cutting with easy handling



Non-slip elastomer-covered body grip for increased operator comfort.

Precision cutting depth adjustment



Simple and efficient base lock system

High durability and accuracy obtained by using aluminum for trimmer base

Replaceable, non-marring plastic base plate for protection of trimmer base and smooth sliding on work surface



## with Tilt base (option)

Ergonomic body grip easy-to-grasp with one hand  
Tilting capacity: -30° to 45°



Enlarged opening section of base assembly for excellent bit visibility.

Non-slip elastomer-covered body grip for increased operator comfort.

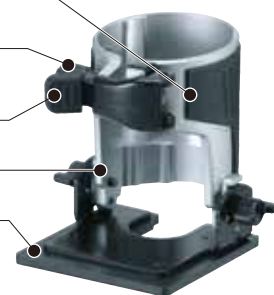
Precision cutting depth adjustment



Simple and efficient base lock system

High durability and accuracy obtained by using aluminum for base holder

Replaceable, non-marring plastic base plate for protection of plunge base and smooth sliding on work surface



## AWS Auto-start Wireless System

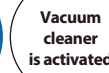
connects to compatible vacuum cleaner with Bluetooth.  
The vacuum cleaner automatically runs while the switch is on.



Wireless unit is compatible with all supported tools



Switch on the tool



Vacuum cleaner is activated



## Easy-to-Customize



## with Plunge base (option)

Precision cutting depth adjustment  
Plunge capacity: 0 - 35mm (0 - 1-3/8")



Ergonomically contoured knob style handles



Optional Fine adjusting straight guide can be used.

Easy-to-operate lock lever

Rubberized soft grip

3 stage cut depth adjustment

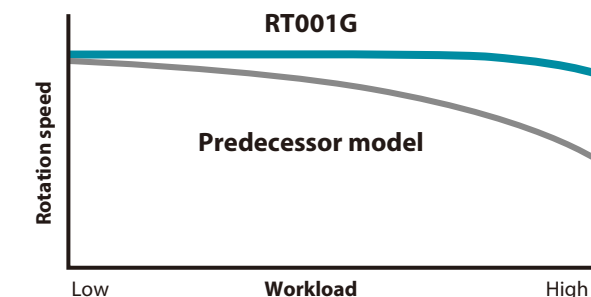
High durability and accuracy obtained by using aluminum for plunge base

Replaceable, non-marring plastic base plate for protection of plunge base and smooth sliding on work surface



## Constant speed control

minimizes the reduction in bit speed to provide stable trimming.



## Electric brake (Soft-brake)

The gentle stop of the product reduces the damage to the work material due to the reaction of the stop.



## with Offset base (option)

Stable trimming is possible with a bit set in offset position.  
Able to cut close to a wall or corner-18.5mm at closest



Non-slip elastomer-covered body grip for increased operator comfort.

Simple and efficient base lock system

High durability and accuracy obtained by using aluminum for offset base

Replaceable, non-marring plastic base plate for protection of trimmer base and smooth sliding on work surface

