



Angle Grinder GA5080R 125 mm (5")



Just One Click



XLOCK

Quick and Easy Wheel Change System

Snap-in in a second



Continuous Rating Input

1,400 w

GA5080R:

with Anti-restart function

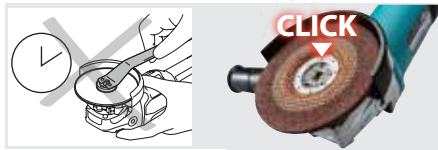


Quick and easy wheel change

X-LOCK



Just one click to attach the accessories
easy removal just simply pull the lever



No downtime
of installing and removing the accessories.
Improve your work efficiency and work environment



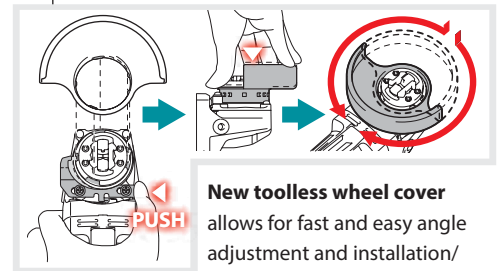
No tool required
X-LOCK mechanism ensures that the accessory is properly mounted to the tool even without nut, flange, and spanner.



No over-tightening
X-LOCK accessories are firmly attached and cannot be mounted incorrectly.



No scratching workpiece
by nuts even when flat grinding.



New toolless wheel cover
allows for fast and easy angle adjustment and installation/removal of wheel cover.



Function of LED light



Solid Green indicates that the tool is ready to work.



Anti-restart function
prevents accidental startup
Even if plugged in with the switch "ON", the tool does not start with a blinking red light for visual warning.

Accessories

Dust Collection wheel guard

for Diamond wheel
Part No. 191G05-4



Wheel cover

for abrasive cut-off wheel
Part No. 162708-5



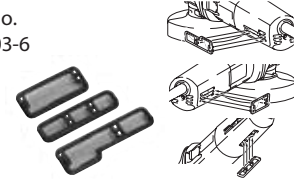
Anti-vibration grip

Part No. 194514-0



Dust cover attachment set

Part No. 193903-6



125mm X-LOCK wheels

125mm X-LOCK accessories are compatible with conventional angle grinders.

Grinding wheel / Metal

Part No. E-00393(EN)



Thin Cut-off wheel (Flat)

Part No. E-00418(EN)



Grinding wheel / Stainless

Part No. E-00402(EN)



Diamond wheel / concrete

Part No. E-02076



Angle Grinder

GA5080R 125 mm (5")

318

Double Insulation	1,400W
Constant Speed	125 mm (5") / 22.3 mm (7/8")
Soft Start	31 mm (1-1/4")
Dust Collection	12,000
Standard Equipment :	Surface Grinding w/ Normal Side Grip:
Depressed Center Wheel, Side Grip, Wheel Cover	7.5m/s ²
	84dB(A)
	95dB(A)
	309 x 141 x 113 mm
	(12-1/8 x 5-9/16 x 4-7/16")
	2.5 - 3.6 kg (5.5 - 7.9 lbs.)
	2.5 m (8.2 ft)

The weight may differ depending on the attachment(s), including the battery cartridge.

The lightest and heaviest combination, according to EPTA-Procedure 01/2014, are shown in the table.

Items of standard equipment and specifications may vary by country or area.

Makita Singapore Pte Ltd

7, Changi South Street 3, Singapore 486348
Phone : +65-6546-8700 Fax : +65-6546-8711
Email : msgproductteam@makita.com.sg
Website : www.makita.com.sg
Facebook : www.facebook.com/MakitaSG



MakitaSG



VISIT OUR WEBSITE



DOWNLOAD LEAFLET

PRINTED IN SINGAPORE