



**Cordless Angle Grinder**  
**GA035G, GA036G 150 mm (6")**



**40V** **Li-ion**  
**max**

**Delivers the same power as 1,000W corded grinders**

**150mm 40Vmax Angle Grinder**







## GA035G

Slide switch

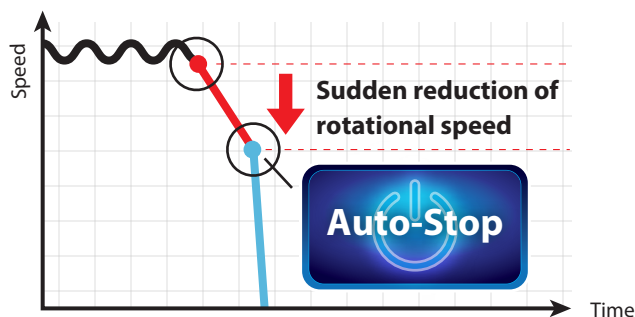


## GA036G

Paddle switch

## AFT Active Feedback sensing Technology

Shuts down the tool, if the rotation speed suddenly slows down.



## Accessories

### Wheel cover

for cut-off wheel  
Part No. 162947-7



### Vibration proof grip set

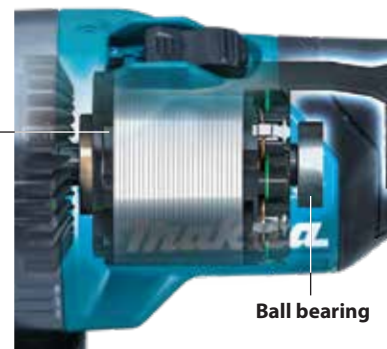
Part No. 194514-0



## High power

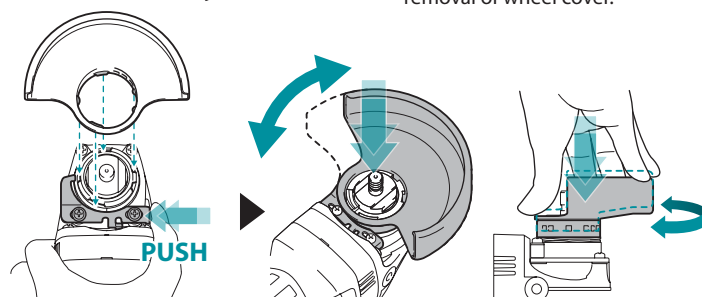
40Vmax XGT Li-Ion battery and BL motor deliver sufficient power even to rotate a 150mm wheel.

**BL  
MOTOR**



## New toolless wheel cover (Slide lever style)

allows for fast and easy angle adjustment and installation / removal of wheel cover.



**XPT**

**eXtreme Protection Technology**



## Electric brake

maximizes productivity and increases safety for operator

## Cordless Angle Grinder

### GA035G, GA036G 150 mm (6")

	GA035G/ GA036G
Brake	Wheel Diameter 150 mm (6")
Soft Start	Hole Diameter 22.23 mm (7/8")
Dust Collection	No Load Speed (RPM) 8,500
	Circumference of Grip Portion 146 mm (5-3/4") / 151 mm (5-15/16")
	Vibration Level Surface Grinding w/ Normal Side Grip: 7.0 m/s <sup>2</sup> / 9.0 m/s <sup>2</sup>
	Surface Grinding w/ Anti-Vibration Side Grip: 9.5 m/s <sup>2</sup> / 9.0 m/s <sup>2</sup>
	Disc Sanding w/ Normal Side Grip: 4.5 m/s <sup>2</sup> / 4.0 m/s <sup>2</sup>
	Disc Sanding w/ Anti-Vibration Side Grip: 4.0 m/s <sup>2</sup> / 3.5 m/s <sup>2</sup>
	Sound Pressure Level 82 dB(A)
	Sound Power Level 93 dB(A)
	Dimensions (L x W x H) w/ BL4020 / BL4025: 398 x 171 x 156 mm (15-5/8 x 6-3/4 x 6-1/8")
	w/ BL4040: 410 x 171 x 168 mm (16-1/8 x 6-3/4 x 6-5/8")
	Net weight 3.0 - 4.0 kg (6.6 - 8.8 lbs.)

The weight may differ depending on the attachment(s), including the battery cartridge.  
The lightest and heaviest combination, according to EPTA-Procedure 01/2014, are shown in the table.  
Items of standard equipment and specifications may vary by country or area.

## Makita Singapore Pte Ltd

7, Changi South Street 3, Singapore 486348  
Phone : +65-6546-8700 Fax : +65-6546-8711  
Email : msgproductteam@makita.com.sg  
Website : www.makita.com.sg  
Facebook : www.facebook.com/MakitaSG



VISIT OUR WEBSITE



DOWNLOAD LEAFLET

PRINTED IN SINGAPORE