

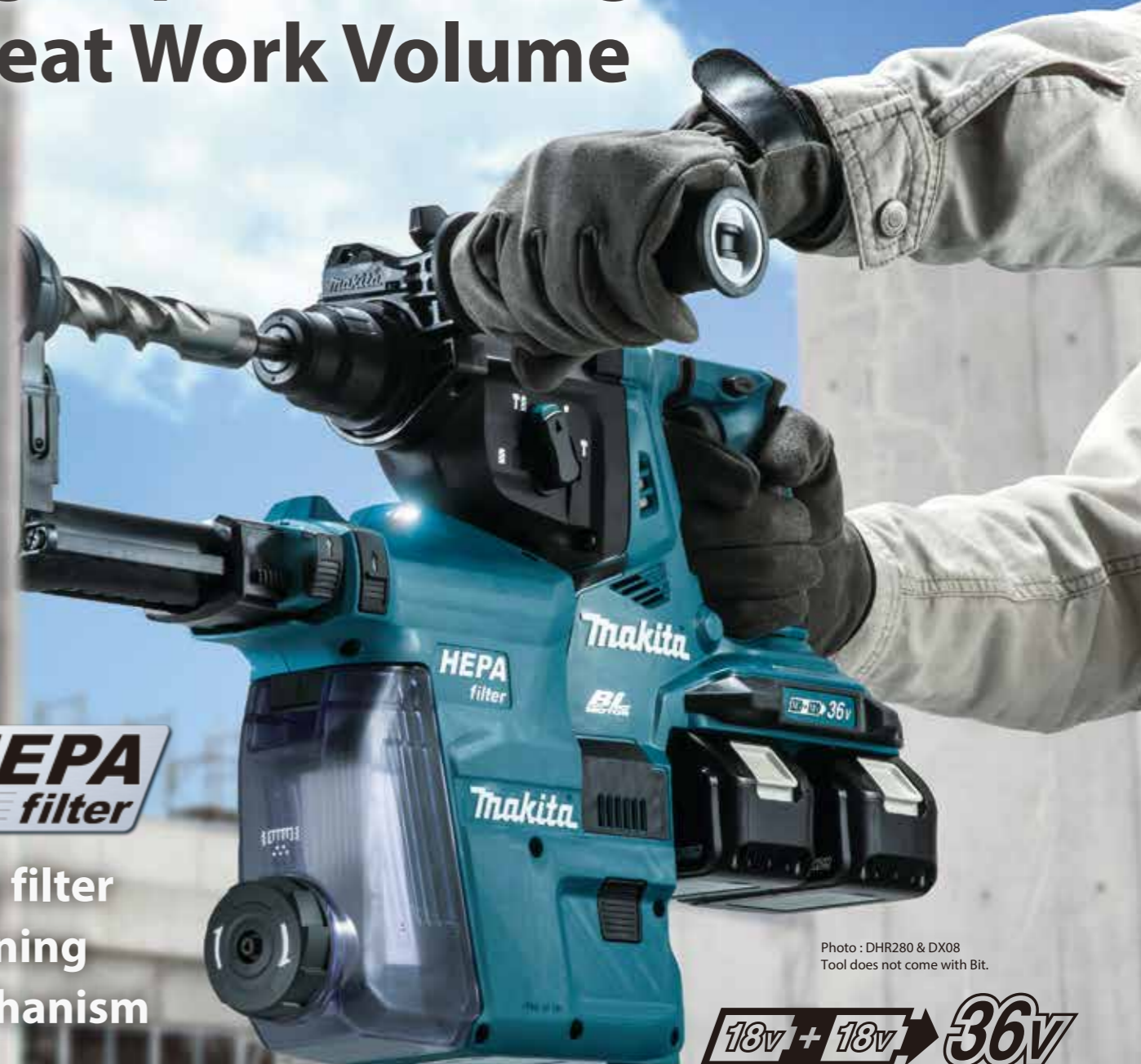


**Cordless Combination Hammer**  
**DHR280 / DHR281 / DHR282** *AWS*  
**DHR283** *AWS* 28 mm (1-1/8")



Adapted for  
SDS-PLUS bits

# High Speed Drilling and Great Work Volume



with filter cleaning mechanism

Photo : DHR280 & DX08  
Tool does not come with Bit.

**18V + 18V → 36V**

**DHR280**

**DHR282** *AWS*



DX08 ▶  
(199579-7)

**DHR281**

**DHR283** *AWS*

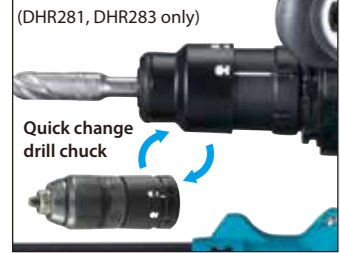


Quick change drill chuck



DX09 ▶  
(199583-6)

## Quick change chuck Type



(DHR281, DHR283 only)

Quick change drill chuck

## Depth gauge

can be adjusted for desired drilling depth simply by pushing single push button

## Twin LED job light



## Dust collection inlet

can be adjusted according to bit length simply by pushing single push button

## Large dust box cover

can be opened simply by pushing single push button for easy dust cleaning.

## Filter cleaning mechanism

## Accessories

### Dust extraction system set

**DX08**  
(199579-7) for  
DHR280, DHR282



### Dust case

Part No.  
199555-1



### HEPA Filter

High Efficiency Particulate Air filter is widely regarded as ultimate filter that traps all sizes of particles with an efficiency rating of 99.75%.



Part No.  
199557-7



### Dust cup

DHR280, DHR282  
Part No. 195173-3



DHR281, DHR283  
Part No. 195179-1



## Cordless Combination Hammer DHR280 / DHR281 / DHR282 / DHR283

- Variable Speed
- Built-in Job Light
- Brake
- Carrying Case
- Reversing
- SDS-PLUS Shank
- Torque Limiter
- Constant Speed
- Dust Collection

|                               | DHR280 / DHR282   | DHR281 / DHR283   |
|-------------------------------|---|---|
| <b>Impact Energy Capacity</b> | EPTA-Procedure 05/2009: 2.8 J<br>Concrete / Steel / Wood / Core Bit / Diamond Core Bit (Dry Type):<br>28 / 13 / 32 / 54 / 65 mm (1-1/8" / 1/2" / 1-1/4" / 2-1/8" / 2-9/16") | EPTA-Procedure 05/2009: 2.8 J<br>Concrete / Steel / Wood / Core Bit / Diamond Core Bit (Dry Type):<br>28 / 13 / 32 / 54 / 65 mm (1-1/8" / 1/2" / 1-1/4" / 2-1/8" / 2-9/16") |
| <b>Blows Per Minute (BPM)</b> | 0 - 5,000   | 0 - 5,000   |
| <b>No Load Speed (RPM)</b>    | 0 - 980   | 0 - 980   |
| <b>Chuck capacity</b>         | 1.5 - 13 mm (1/16 - 1/2")   | 1.5 - 13 mm (1/16 - 1/2")   |
| <b>Vibration Level</b>        | Hammer Drilling into Concrete: 9.0 m/s <sup>2</sup><br>Drilling Into Metal: 2.5 m/s <sup>2</sup>  | Hammer Drilling into Concrete: 9.5 m/s <sup>2</sup><br>Drilling Into Metal: 2.5 m/s <sup>2</sup>  |
| <b>Sound Pressure Level</b>   | 93 dB(A)  | 92 dB(A)  |
| <b>Sound Power Level</b>      | 104 dB(A)   | 103 dB(A)   |
| <b>Dimensions (L x W x H)</b> | 373x134x232 mm (14-3/4"x5-1/4"x9-1/8")  | 404x134x232 mm (15-7/8"x5-1/4"x9-1/8")  |
| <b>Net weight</b>             | DHR280 : 3.9 - 4.9 kg (8.6 - 10.8 lbs.)<br>DHR282 : 3.9 - 5.0 kg (8.6 - 11.0 lbs.)  | DHR281 : 4.0 - 5.1 kg (8.8 - 11.2 lbs.)<br>DHR283 : 4.1 - 5.1 kg (9.0 - 11.2 lbs.)  |

**Standard Equipment :**  
 DHR280, DHR282 : Side Grip, Depth Gauge, Battery, Charger, Dust Cup (country-specific), Cleaning cloth (country-specific), Bit Grease (country-specific)  
 DHR281, DHR283 : Quick Change Drill Chuck, Side Grip, Depth Gauge, Battery, Charger, Dust Cup (country-specific), Cleaning cloth (country-specific), Bit Grease (country-specific)

The weight may differ depending on the attachment(s), including the battery cartridge. The lightest and heaviest combination, according to EPTA-Procedure 01/2014, are shown in the table. Items of standard equipment and specifications may vary by country or area.

## Makita Singapore Pte Ltd

7, Changi South Street 3, Singapore 486348  
 Phone : +65-6546-8700 Fax : +65-6546-8711  
 Email : msgproductteam@makita.com.sg  
 Website : www.makita.com.sg  
 Facebook : www.facebook.com/MakitaSG



MakitaSG



VISIT OUR WEBSITE



DOWNLOAD LEAFLET

PRINTED IN SINGAPORE



(DHR282, DHR283 only)



# Excellent Power and Low Vibration

28 mm Cordless Combination Hammer

Max Bit length : 260mm

HEPA filter

Filter cleaning mechanism by turning the dial, the dust falls off from the filter



**BL MOTOR** Brushless Motor

Work Speed

About 40%UP Predessor Model

Work Volume

About 65%UP Predessor Model

Concrete with compressive strength of 40N/mm<sup>2</sup>  
Diameter : Ø12.5mm(1/2"), depth of 60mm(2-3/8")



Twin LED job light

Speed dial

Drilling Work Amount

Diameter : Ø12.5mm(1/2" )

About

140 pcs.

(Battery : BL1850B x2)

Photo : DHR280 & DX08

18v + 18v → 36v XPT

**AVT** Anti Vibration Technology

Less Vibration

Vibration level

[Chiselling] 8.0m/s<sup>2</sup> / [Drilling ( into metal )] 2.5m/s<sup>2</sup>

[Hammer drilling ( into concrete )] 9.0m/s<sup>2</sup>

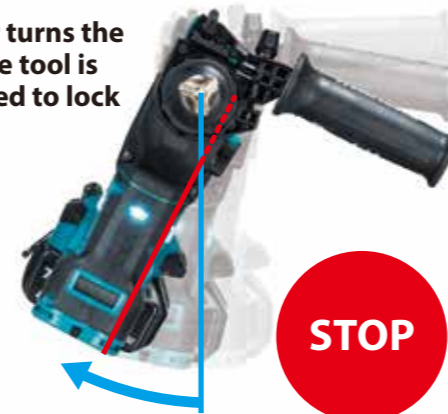
Anti-vibration grip Counterweight Vibration absorbing handle



**AFT** Active Feedback sensing Technology

DHR282, DHR283 only

Torque limiter turns the motor off if the tool is suddenly forced to lock



**AWS**

Auto - start Wireless System DHR282, DHR283 only



Switch on the tool



Vacuum cleaner is activated

Bluetooth

Accessories

Wireless Unit 199393-1



Features and benefits

|                            | DHR280 | DHR281 | DHR282 | DHR283 |
|----------------------------|--------|--------|--------|--------|
| Quick change drill chuck   |        | ✓      |        | ✓      |
| <b>AFT</b>                 |        |        | ✓      | ✓      |
| <b>AWS</b>                 |        |        | ✓      | ✓      |
| <b>AVT</b>                 | ✓      | ✓      | ✓      | ✓      |
| Dust extraction system set | DX08   | DX09   | DX08   | DX09   |