



Cordless Cleaner Series DCL184 / CL121D

Satisfy Professional's Needs



Born to clean the vehicles



Accessories

Mat nozzle 120

Part No.
459056-4



Seat nozzle 120

Part No.
140H95-0



Rubber nozzle 330

Part No.
422437-5



Soft brush 360

Part No.
140H94-2



Blower attachment

Part No.
140J64-3



Paper filter set

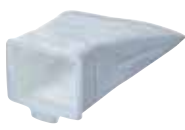
5pcs/set

Part No.
194566-1



Dust bag

Part No.
198746-1



Easy shake off filter

Part No.
198748-7



Valve stay complete

Part No.
143677-9



Shoulder belt

Part No.
162544-9



Tool bag

Part No.
199900-0



Charging Time

DCL184

	DC18RC	DC18SD
BL1815N 1.5Ah	15 min	30 min
BL1830B 3.0Ah	22 min	60 min
BL1850B 5.0Ah	45 min	110 min
BL1860B 6.0Ah	55 min	130 min

CL121D

	DC10SB	DC10WD
BL1016 1.5Ah	22min	50min
BL1021B 2.0Ah	30min	70min
BL1041B 4.0Ah	60min	130min



Cordless Cleaner

DCL184 / CL121D

Electronic 3-Speed

Standard Equipment :

Seat Nozzle, Mat Nozzle, Rubber Nozzle,
Soft Brush, Blower Attachment, Dust Bag,
Paper Dust Bag, Shoulder Belt, Battery,
Charger

Capacity Continuous Use(min.)* Max Air Flow

Max Air Velocity Max Sealed Suction (water column) Vibration Level Noise Level Dimensions (L x W x H)

Net weight

* DCL184: BL1850B / CL121D: BL1041B

DCL184

Cloth / Paper Dust Bag: 500 / 330 mL
Max / High / Normal: 33 / 50 / 133
Cleaning: 1.4 m³/min
Blowing: 0.8 m³/min
Blowing: 7.2 m/s
5.4 kPa (550 mmH₂O)
0.4 m/s²
Max / High / Normal: 68 / 65 / 58 dB(A)
w/ BL1830B / BL1850B / BL1860B:
365x138x202 mm (14-3/8"x5-7/16"x8")

1.8 - 2.2 kg (4.0 - 4.9 lbs.)

CL121D

Cloth / Paper Dust Bag: 500 / 330 mL
Max / High / Normal: 27 / 32 / 67
Cleaning: 1.3 m³/min
Blowing: 0.7 m³/min
Blowing: 5.6 m/s
4.6 kPa (470 mmH₂O)
0.89 m/s²
Max / High / Normal: 68 / 67 / 61 dB(A)
w/ BL1016 / BL1021B:
345x138x202 mm (13-5/8"x5-7/16"x8")
w/ BL1041B: 359x138x202 mm (14-1/8"x5-7/16"x8")
1.7 - 1.8 kg (3.7 - 4.0 lbs.)

The weight does not include accessories but battery cartridge(s). The lightest and heaviest combination weight of the appliance and battery cartridge(s) are shown in the table.
Items of standard equipment and specifications may vary by country or area.

Makita Singapore Pte Ltd

7, Changi South Street 3, Singapore 486348
Phone : +65-6546-8700 Fax : +65-6546-8711
Email : msgproductteam@makita.com.sg
Website : www.makita.com.sg
Facebook : www.facebook.com/MakitaSG



VISIT OUR WEBSITE



DOWNLOAD LEAFLET

PRINTED IN SINGAPORE

DCL184



Max Air Flow
1.4 m³/min
Cleaning

Max Sealed
Suction
5.4 kPa
(550mmH₂O)

CL121D



Max Air Flow
1.3 m³/min
Cleaning

Max Sealed
Suction
4.6 kPa
(470mmH₂O)

Ideal for interior cleaning



Especially designed variable attachments



Mat nozzle
120



Seat nozzle
120



Rubber
nozzle 330



photo: DCL184

Soft brush
360



Cordless Cleaner

Model No.	Battery	Continuous Use (min.) Max / High / Normal	Net weight	Capacity
DCL184	18V LITHIUM-ION	about 33 / 50 / 133 min with BL1850B	2.2 kg with BL1850B	Cloth Dust Bag 500 mL
CL121D	12Vmax LITHIUM-ION	about 27 / 32 / 67 min with BL1041B	1.8 kg with BL1041B	Paper Dust Bag 330 mL



ON/speed change button
2: High speed mode
3: Max speed mode
1: Normal speed mode
OFF button



Storable flexible hose
Unfolded hose may catch your foot and cause personal injury.



photo: DCL184

Straight pipe

Blower attachment



Battery

DCL184



CL121D



Indication lamp

Battery capacity warning lamp starts blinking when the remaining battery capacity gets low

