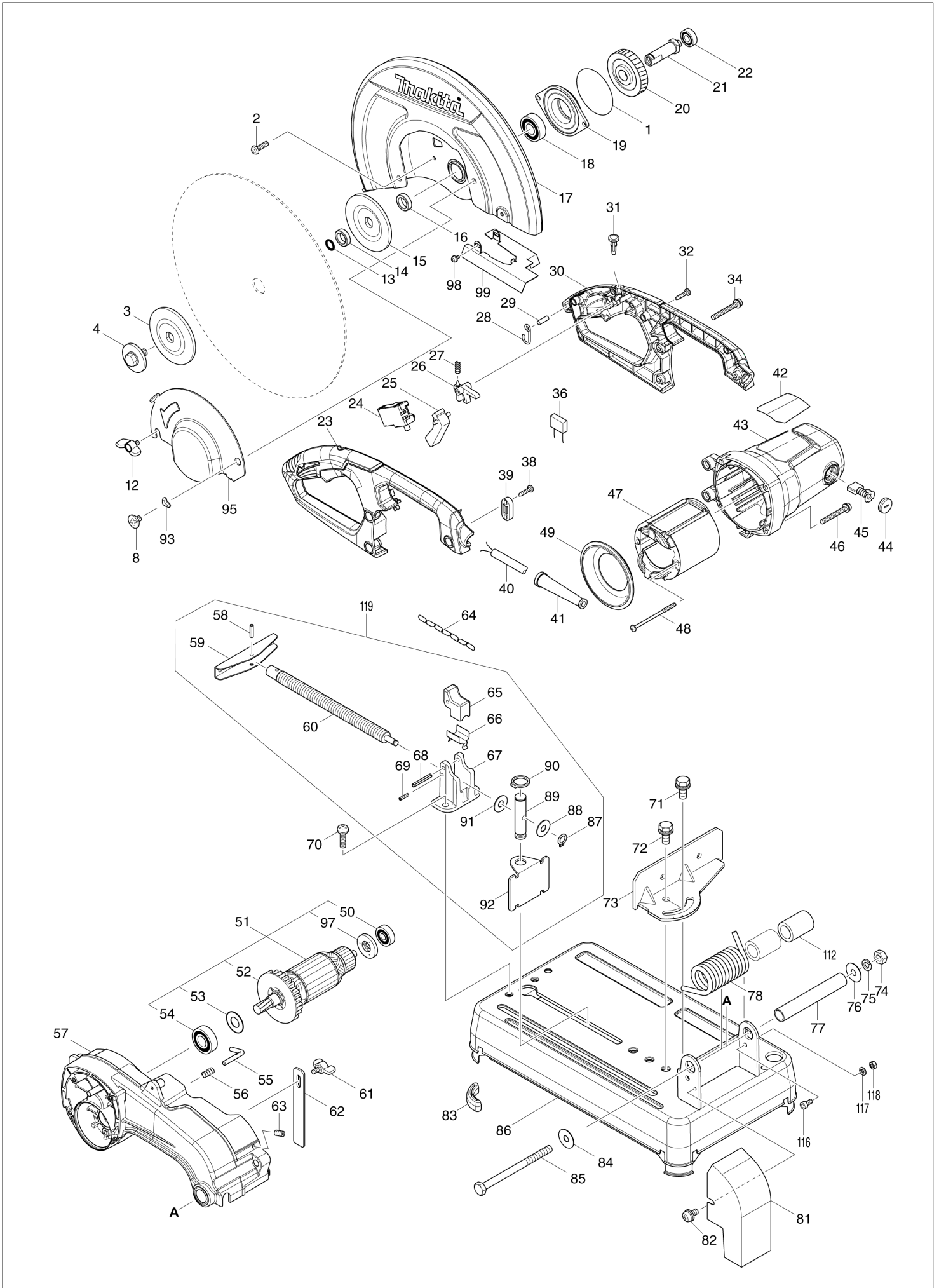


(SG) LW1401 / 355MM PORTABLE CUT-OFF



SG

SINGAPORE

LW1401 / 355MM PORTABLE CUT-OFF

Item	Sub	Parts No.	Parts Description	Qty	I/C	E/C No.	Close No.	Remark
001		213858-0	O-RING 65	1				
002		265122-5	PAN HEAD SCREW M5X20	4				
003		224299-5	FLANGE 90	1				
004		251680-7	HEX. BOLT M10X25	1				
005A		418142-0	PLUG	1	S	B2649		
005G		418142-0	PLUG	1				
006A		418142-0	PLUG	1	S	B2649		
006G		418142-0	PLUG	1				
007A		161398-1	SAFETY GUIDE	1	S	B2649		
007G		161398-1	SAFETY GUIDE	1				
008		265121-7	+ FLAT HEAD SCREW M6	1				
012A		265754-8	THUMB SCREW M6X12	1			B2649	
013		213180-5	O RING 14	1				
014		257255-0	RING 17	1				
015		224299-5	FLANGE 90	1				
016		257255-0	RING 17	1				
017		161400-0	SAFETY COVER	1				
018		211282-1	BALL BEARING 6203ZZ	1				
019		319393-7	BEARING BOX	1			Y07850	
019-1		136029-1	BEARING BOX ASSY	1	<	Y07850		
	D10		INC. 1					
020		227811-0	HELICAL GEAR 50	1				
021		324321-9	SPINDLE	1				
022		210067-2	BALL BEARING 6000ZZ	1			C7958	
022-1		210199-5	BALL BEARING 6000ZZ	1	O	C7958		
023		183C14-3	HANDLE SET	1				
	D10		INC. 30					
024		650716-3	SWITCH TGC31B	1				
025		418141-2	SWITCH LEVER	1				
026		418139-9	SWITCH LOCK	1				
027		231397-8	COMPRESSION SPRING 4	1				
028		281216-8	HANGER	1				
029		268101-2	PIN 6	1				
030		183C14-3	HANDLE SET	1				
	D10		INC. 23					
031A		411478-6	SWITCH BUTTON	1			B5006	
031-1A		417113-4	SWITCH BUTTON	1	<	B5006		
031-1G		417113-4	SWITCH BUTTON	1				
032		266326-2	TAPPING SCREW 4X18	4				
034		265104-7	PAN HEAD SCREW M5X40	3				
038		266326-2	TAPPING SCREW 4X18	2				
039		687124-5	STRAIN RELIEF	1				
040A		692506-8	POWER SUPPLY CORD 1.0-2-3.0	1				
040G		664478-7	POWER SUPPLY CORD #14-2-3.0	1				
041A		682540-6	CORD GUARD 9.3-90	1				
041G		682574-9	CORD GUARD 10-90	1				
042		851S55-0	LW1401 NAME PLATE	1				
043		143463-8	MOTOR HOUSING COMPLETE	1				
	C10	643712-8	BRUSH HOLDER	2				
044		643700-5	BRUSH HOLDER CAP 7-18	2				
045A		191953-5	CARBON BRUSH CB-203	1				
045G		194991-6	CARBON BRUSH SET CB203	1				
046		265104-7	PAN HEAD SCREW M5X40	4				
047A		593909-8	FIELD ASS'Y 240V	1			B7354	
	C10	654197-3	RING TERMINAL	2			B7354	
	C20	654502-4	CONNECTOR P-2	2			B7354	
047G		593905-6	FIELD ASS'Y 100-115V	1				
	C10	654197-3	RING TERMINAL	2				
	C20	654502-4	CONNECTOR P-2	2				
047-1A		599089-8	FIELD ASS'Y 240V	1	<	B7354		
	C10	654197-3	RING TERMINAL	2		B7354		
	C20	654502-4	CONNECTOR P-2	2		B7354		
048		265A13-6	TAPPING SCREW 5X85	2				
049		418143-8	BAFFLE PLATE	1				
050		210070-3	BALL BEARING 6200ZZ	1				

A:LW1401(H)
G:LW1401(L)Interchange
O : Yes
X : No
< : the new part can be substituted for the current.
> : the current part can be substituted for the new.
S : Interchangeable as a set.

SG

SINGAPORE

LW1401 / 355MM PORTABLE CUT-OFF

Item	Sub	Parts No.	Parts Description	Qty	I/C	E/C No.	Close No.	Remark
051A		513463-6	ARMATURE ASS'Y 220-240V	1			B7354	
	D10		INC. 50,52-54,97				B7354	
051G		513461-0	ARMATURE ASS'Y 115V	1				
	D10		INC. 50,52-54,97					
051-1A		518186-1	ARMATURE ASS'Y 240V	1	<	B7354		
	D10		INC. 50,52-54,97			B7354		
052		240164-0	FAN 80	1				
053		267714-6	WASHER 15	1				
054		211240-7	BALL BEARING 6202ZZ	1				
055		324322-7	STOPPER	1				
056		233372-0	COMPRESSION SPRING 7	1				
057A		143464-6	GEAR HOUSING COMPLETE	1			B2830	
	C10	263029-9	RUBBER PIN 6	1			B2830	
057-1A		143464-6	GEAR HOUSING COMPLETE	1	S	B2830	C3995	
	C10	263029-9	RUBBER PIN 6	1		B2830	C3995	
057-1G		143464-6	GEAR HOUSING COMPLETE	1			C3995	
	C10	263029-9	RUBBER PIN 6	1			C3995	
057-2		140G83-1	GEAR HOUSING COMPLETE	1	<	C3995	C5969	
	C10	263029-9	RUBBER PIN 6	1		C3995	C5969	
057-3		140D69-7	GEAR HOUSING COMPLETE	1	O	C5969		
	C10	263029-9	RUBBER PIN 6	1		C5969		
058		951163-4	SPRING PIN 5-20	1				
059		272027-2	HANDLE 120	1				
060		324323-5	WISE SCREW	1			C7289	
060-1		326802-9	WISE SCREW	1	O	C7289		
061		265754-8	THUMB SCREW M6X12	1				
062		345310-1	STOPPER PLATE	1				
063A		251961-9	H.S.SET SCREW(FLAT POINT)M6X10	1			B2649	
063G		266321-2	H.S.SET SCREW(FLAT POINT)M6X16	1				
063-1A		266321-2	H.S.SET SCREW(FLAT POINT)M6X16	1	S	B2649		
064		282015-1	CHAIN	1				
065		313114-9	WISE NUT	1				
066		345311-9	PLATE	1				
067		317662-0	SCREW GUIDE	1				
068		951175-7	SPRING PIN 5-36	1				
069		951110-5	SPRING PIN 4-16	1				
070		265125-9	PAN HEAD SCREW M8X30	2				
071		265508-3	HEX.BOLT M10X25	1				
072		265508-3	HEX.BOLT M10X25	1				
073		345315-1	GUIDE PLATE	1				
074		252183-4	HEX.NUT M10-17	1				
075		942251-8	SPRING WASHER 10	1				
076		253197-6	FLAT WASHER 10	1				
077		331648-0	PIPE 20-128	1				
078		233633-8	TORSION SPRING 33	1				
081		345313-5	SPARK GUARD	1				
082		265144-5	PAN HEAD SCREW M6X12	1				
083		421834-2	CUSHION	3				
084		253197-6	FLAT WASHER 10	1				
085		265509-1	HEX.BOLT M10X140	1				
086		165352-7	BASE	1				
087		961004-6	RETAINING RING S-8	1				
088		267257-8	FLAT WASHER 8	1				
089		256474-5	SHOULDER PIN 10-16	1				
090		961056-7	RETAINING RING S-16	1				
091		267257-8	FLAT WASHER 8	1				
092		345312-7	WISE PLATE	1				
093		253903-9	WAVE WASHER 6	1				
095A		346969-7	CENTER CAP	1			B2649	
097		681630-2	INSULATION WASHER	1				
112		257390-4	SLEEVE 20	2			B6664	
112-1		257413-8	SLEEVE 20	2	O	B6664		
116A		922311-2	HEX. SOCKET HEAD BOLT M6X12	1			B2830	
116-1A		922312-0	HEX. SOCKET HEAD BOLT M6X12	1	S	B2830		
116-1G		922312-0	HEX. SOCKET HEAD BOLT M6X12	1				

A:LW1401(H)
G:LW1401(L)Interchange
O : Yes
X : No
< : the new part can be substituted for the current.
> : the current part can be substituted for the new.
S : Interchangeable as a set.

