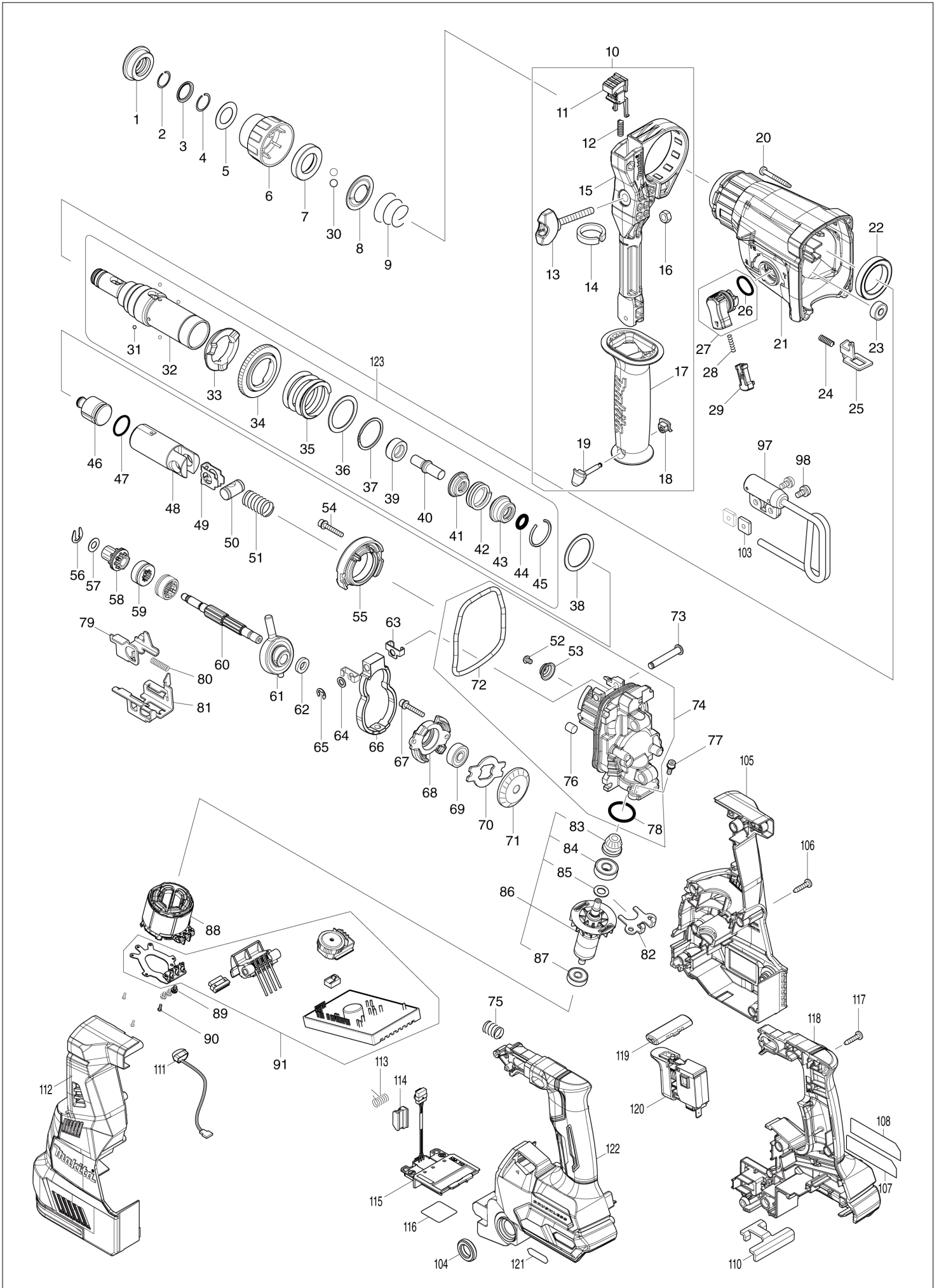


(QA) HR003G / 28MM CRDLS COMBINATION HAMMER



HR003G / 28MM CRDLS COMBINATION HAMMER

| Item | Sub | Parts No. | Parts Description | Qty | I/C | E/C No. | Close No. | Remark |
|------|-----|-----------|------------------------------|-----|-----|---------|-----------|--------|
| 001 | | 286288-8 | CAP 35 | 1 | | | | |
| 002 | | 233989-9 | RING SPRING 14 | 1 | | | | |
| 003 | | 346834-0 | WASHER 16 | 1 | | | | |
| 004 | | 233992-0 | RING SPRING 15 | 1 | | | | |
| 005 | | 267114-0 | FLAT WASHER 17 | 1 | | | | |
| 006 | | 455393-4 | CHUCK COVER | 1 | | | | |
| 007 | | 325813-1 | RING 21 | 1 | | | | |
| 008 | | 346177-0 | GUIDE WASHER | 1 | | | | |
| 009 | | 233916-6 | CONICAL COMP. SPRING 21-29 | 1 | | | | |
| 010 | | 126882-3 | GRIP ASSEMBLY | 1 | | | | |
| | D10 | | INC. 11-19 | | | | | |
| 011 | | 144959-2 | LOCK BUTTON COMPLETE | 1 | | | | |
| 012 | | 233360-7 | COMPRESSION SPRING 4 | 1 | | | | |
| 013 | | 265625-9 | THUMB SCREW M6X50 | 1 | | | | |
| 014 | | 422258-5 | SPONGE SHEET | 1 | | | | |
| 015 | | 458355-1 | SIDE HANDLE BASE | 1 | | | | |
| 016 | | 931302-2 | HEX. NUT M6 | 1 | | | | |
| 017 | | 458357-7 | GRIP 36 | 1 | | | | |
| 018 | | 422255-1 | CAP | 1 | | | | |
| 019 | | 161838-9 | FIX PIN | 1 | | | | |
| 020 | | 266351-3 | TAPPING SCREW 4X35 | 4 | | | | |
| 021 | | 144965-7 | GEAR HOUSING COMPLETE | 1 | | | | |
| | C10 | 213345-9 | OIL SEAL 25 | 1 | | | | |
| | C20 | 331890-3 | CUP SLEEVE | 1 | | | | |
| 022 | | 211294-4 | BALL BEARING 6806LLU | 1 | | | | |
| 023 | | 211012-0 | BALL BEARING 606ZZ | 1 | | | | |
| 024 | | 233360-7 | COMPRESSION SPRING 4 | 1 | | | | |
| 025 | | 347228-2 | LOCK PLATE | 1 | | | | |
| 026 | | 213278-8 | O RING 17 | 1 | | | | |
| 027 | | 135961-6 | CHANGE LEVER ASSY | 1 | | | | |
| | D10 | | INC. 26 | | | | | |
| 028 | | 234264-6 | COMPRESSION SPRING 3 | 1 | | | | |
| 029 | | 457709-9 | LOCK BUTTON | 1 | | | | |
| 030 | | 216022-2 | STEEL BALL 7.0 | 2 | | | | |
| 031 | | 216019-1 | STEEL BALL 3 | 4 | | | | |
| 032 | | 142972-4 | TOOL HOLDER COMPLETE | 1 | | | | |
| | C10 | 213344-1 | OIL SEAL 9 | 1 | | | | |
| 033 | | 332139-4 | DRIVING FLANGE | 1 | | | | |
| 034 | | 227360-7 | SPUR GEAR 51 | 1 | | | | |
| 035 | | 234148-8 | COMPRESSION SPRING 31 | 1 | | | | |
| 036 | | 267153-0 | FLAT WASHER 30 | 1 | | | | |
| 037 | | 257932-4 | SPIRO LOCK WASHER 30 | 1 | | | | |
| 038 | | 267153-0 | FLAT WASHER 30 | 1 | | | | |
| 039 | | 325783-4 | SLEEVE 9B | 1 | | | | |
| 040 | | 325789-2 | IMPACT BOLT A | 1 | | | | |
| 041 | | 325792-3 | WASHER 10 | 1 | | | | |
| 042 | | 234149-6 | COMPRESSION SPRING 20 | 1 | | | | |
| 043 | | 325793-1 | O-RING CASE B | 1 | | | | |
| 044 | | 213073-6 | O RING 9 | 1 | | | | |
| 045 | | 233979-2 | RING SPRING 28 | 1 | | | | |
| 046 | | 325784-2 | STRIKER | 1 | | | | |
| 047 | | 213258-4 | O RING 17.5 | 1 | | | | |
| 048 | | 327079-9 | PISTON CYLINDER | 1 | | | | |
| 049 | | 346036-8 | GUIDE PLATE | 1 | | | | |
| 050 | | 324215-8 | PISTON JOINT | 1 | | | | |
| 051 | | 232449-8 | COMPRESSION SPRING 14 | 1 | | | | |
| 052 | | 265A87-7 | TORX SOCKET BUTTON BOLT M4X8 | 1 | | | | |
| 053 | | 347344-0 | SPRING GUIDE | 1 | | | | |
| 054 | | 922148-7 | HEX. SOCKET HEAD BOLT M4X25 | 2 | | | | |
| 055 | | 144960-7 | INNER SUPPORT COMPLETE | 1 | | | | |
| 056 | | 257336-0 | STOP RING EXT U-6 | 1 | | | | |
| 057 | | 253186-1 | FLAT WASHER 7 | 1 | | | | |
| 058 | | 226170-9 | SPUR GEAR 10 | 1 | | | | |
| 059 | | 332125-5 | CLUTCH CAM | 2 | | | | |
| 060 | | 327078-1 | CAM SHAFT | 1 | | | | |

B:HR003GD201(H)
C:HR003GM201(H)

Interchange
O : Yes
X : No
< : the new part can be substituted for the current.
> : the current part can be substituted for the new.
S : Interchangeable as a set.

QA

HR003G / 28MM CRDLS COMBINATION HAMMER

| Item | Sub | Parts No. | Parts Description | Qty | I/C | E/C No. | Close No. | Remark |
|-------|-----|-----------|-------------------------------|-----|-----|---------|-----------|--------|
| 061 | | 219030-2 | SWASH BEARING 10 | 1 | | | | |
| 062 | | 257321-3 | RING 8 | 1 | | | | |
| 063 | | 346538-4 | WEIGHT HOLDER GUIDE | 2 | | | | |
| 064 | | 253077-6 | FLAT WASHER 6 | 1 | | | | |
| 065 | | 961018-5 | STOP RING E-5 | 1 | | | | |
| 066 | | 310869-7 | COUNTER WEIGHT | 1 | | | | |
| 067 | | 922148-7 | HEX. SOCKET HEAD BOLT M4X25 | 2 | | | | |
| 068 | | 319674-9 | BEARING BOX | 1 | | | | |
| 069 | | 211032-4 | BALL BEARING 608ZZ | 1 | | | | |
| 070 | | 347343-2 | BEARING RETAINER B | 1 | | | | |
| 071 | | 221599-4 | SPIRAL BEVEL GEAR 32 | 1 | | | | |
| 072 | | 213850-6 | O-RING 74 | 1 | | | | |
| 073 | | 256536-9 | FLAT FILLISTER HD PIN 6 | 1 | | | | |
| 074 | | 136194-6 | INNER HOUSING ASS'Y | 1 | | | | |
| | D10 | | INC. 52,53,72,76,78 | | | | | |
| 075 | | 232436-7 | COMPRESSION SPRING 10 | 1 | | | | |
| 076 | | 443153-6 | FELT | 1 | | | | |
| 077 | | 922118-6 | HEX. SOCKET HEAD BOLT M4X12 | 2 | | | | |
| 078 | | 213008-7 | O RING 22.4 | 1 | | | | |
| 079 | | 347230-5 | CHANGE PLATE B | 1 | | | | |
| 080 | | 234343-0 | COMPRESSION SPRING 5 | 1 | | | | |
| 081 | | 347229-0 | CHANGE PLATE A | 1 | | | | |
| 082 | | 346536-8 | BEARING RETAINER A | 1 | | | | |
| 083 | | 144964-9 | SPIRAL BEVEL GEAR 11 COMPLETE | 1 | | | | |
| 084 | | 210024-0 | BALL BEARING 608LLU | 1 | | | | |
| 085 | | 253835-0 | FLAT WASHER 8 | 1 | | | | |
| 086 | | 519513-5 | ROTOR ASSY | 1 | | | | |
| | D10 | | INC. 83-85,87 | | | | | |
| 087 | | 210022-4 | BALL BEARING 626DDW | 1 | | | | |
| 088 | | 629454-8 | STATOR | 1 | | | | |
| 089 | | 652069-6 | FLAT HEAD SCREW M3X6 | 3 | | | | |
| 090 | | 266490-9 | TAPPING SCREW PT 2X6 | 3 | | | | |
| 091 | | 620B99-7 | CONTROLLER | 1 | | | | |
| 097 | | 127344-4 | HOOK ASS'Y | 1 | | | DC491 | |
| 097-1 | | 122B76-0 | HOOK ASSEMBLY | 1 | < | DC491 | | |
| 098 | | 911211-1 | PAN HEAD SCREW M5X12 | 2 | | | | |
| 103 | | 264002-2 | SQUARE NUT M5 | 2 | | | | |
| 104 | | 459184-5 | CUSHION RING 12 | 2 | | | | |
| 105 | | 183N56-3 | HOUSING SET | 1 | | | | |
| | D10 | | INC. 112 | | | | | |
| 106 | | 266326-2 | TAPPING SCREW 4X18 | 8 | | | | |
| 107 | | 856N55-5 | HR003G NAME PLATE | 1 | | | | |
| 108 | | 8008C4-9 | CLEAR LABEL | 1 | | | | |
| 110 | | 346039-2 | SUPPORT PLATE | 1 | | | | |
| 111 | | 620549-0 | LED CIRCUIT | 1 | | | | |
| 112 | | 183N56-3 | HOUSING SET | 1 | | | | |
| | D10 | | INC. 105 | | | | | |
| 113 | | 233598-4 | TORSION SPRING 6 | 1 | | | | |
| 114 | | 313226-8 | OPENER | 1 | | | | |
| 115 | | 632P64-8 | TERMINAL UNIT | 1 | | | | |
| 116 | | 856N60-2 | HR003G SERIAL NO. LABEL | 1 | | | | |
| 117 | | 266326-2 | TAPPING SCREW 4X18 | 7 | | | | |
| 118 | | 183N53-9 | HANDLE SET | 1 | | | | |
| | C10 | 263005-3 | RUBBER PIN 6 | 2 | | | | |
| | D10 | | INC. 122 | | | | | |
| 119 | | 453124-5 | F/R CHANGE LEVER | 1 | | | | |
| 120 | | 651439-6 | SWITCH C3JR-4B-2 | 1 | | | | |
| 121 | | 8005T5-8 | XGT LOGO LABEL | 1 | | | | |
| 122 | | 183N53-9 | HANDLE SET | 1 | | | | |
| | C10 | 263005-3 | RUBBER PIN 6 | 2 | | | | |
| | D10 | | INC. 118 | | | | | |
| 123 | | 135966-6 | TOOL HOLDER ASSY | 1 | | | | |
| | D10 | | INC. 31-37,39-45 | | | | | |
| A01 | | 331886-4 | DEPTH GAUGE | 1 | | | | |
| A02 | | 194683-7 | GREASE VESSEL SET | 1 | | | | |

B:HR003GD201(H)
C:HR003GM201(H)

Interchange
O : Yes
X : No
< : the new part can be substituted for the current.
> : the current part can be substituted for the new.
S : Interchangeable as a set.

