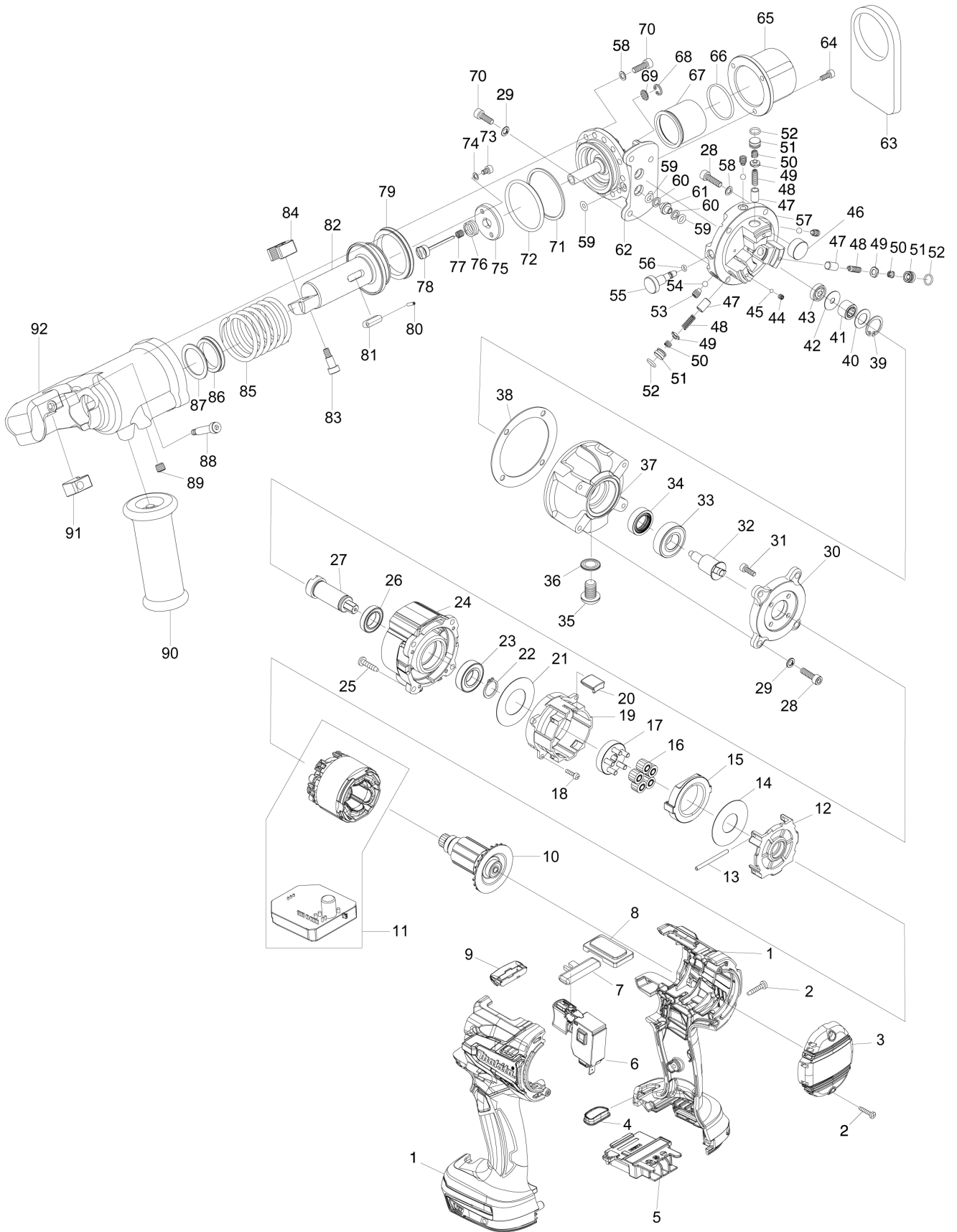


(SG) DSC121 / CORDLESS THREADED ROD CUTTER



SG

SINGAPORE

DSC121 / CORDLESS THREADED ROD CUTTER

Item	Sub	Parts No.	Parts Description	Qty	I/C	E/C No.	Close No.	Remark
001		183C36-3	HOUSING SET	1				
	C10	263005-3	RUBBER PIN 6	2				
002		266130-9	TAPPING SCREW BIND PT 3X16	9				
003		455011-4	REAR COVER	1				
004		142263-3	INDICATOR PANEL COMPLETE	1				
005		643874-2	TERMINAL	1				
006		650710-5	SWITCH C3JW-4B	1				
007		451162-1	LOCK LEVER	1				
008		457799-2	COVER	1				
009		620283-2	LED CIRCUIT	1				
010		619336-2	ROTOR	1				
011		629116-8	STATOR COMPLETE	1				
012		455005-9	MOTOR BRACKET	1				
013		256375-7	ROD 3	2				
014		253401-3	FLAT WASHER 18	1				
015		221558-8	INTERNAL SPUR GEAR 41	1				
016		226193-7	SPUR GEAR 13	5				
017		144591-2	CARRIER COMPLETE	1				
018		911017-7	PAN HEAD SCREW M3X12	4				
019		455006-7	GEAR CASE	1				
020		422168-6	RUBBER SEAL	1				
021		253888-9	FLAT WASHER 25	1				
022		961055-9	RETAINING RING S-15	1				
023		211234-2	BALL BEARING 6902LLB	1				
024		319616-3	GEAR HOUSING	1				
025		266326-2	TAPPING SCREW 4X18	4				
026		211233-4	BALL BEARING 6802LLB	1				
027		326996-0	SPINDLE	1				
028		SC07512050	BOLT HB5X18	8				
029		SC07610030	WASHER SW5	8				
030		SC03220120	MOTOR FLANGE	1				
031		SC07511080	BOLT HB4X12	4				
032		SC00000486	ECCENTRIC SHAFT T45417	1				
033		SC00000050	BALL BEARING 6002RU	1				
034		SC06504050	OIL SEAL UE15257	1				
035		SC07550100	HEX. SOCKET BUTTON BOLT HBB10X	1				
036		SC00000489	SEAL WASHER WF10171.6	1				
037		SC03210040	PIMP CASE	1				
038		SC04601550	LINER B	1				
039		SC00000487	STOP RING H19	1				
040		SC00000465	NEEDLE BEARING HOLDER A T45421	1				
041		SC00000466	NEEDLE BEARING #RNAF81510	1				
042		SC00000467	NEEDLE BEARING HOLDER B T45422	1				
043		SC07100030	BALL BEARING 625	1				
044		SC07521010	BOLT HS4X4	3				
045		SC07900000	STEEL BALL 3	3				
046		SC00000020	MAGNET	1				
047		SC03500380	PISTON	3				
048		SC00000022	PISTON RETURN SPRING	3				
049		SC00000464	CHECK VALVE #T43445N1	3				
050		SC00000468	SPRING #43449N2	3				
051		SC03500540	METAL PACKING	3				
052		SC06505590	O RING S-8	3				
053		SC07523020	BOLT HS6X8	3				
054		SC07900070	STEEL BALL D3/16	3				
055		SC03503900	RETURN VALVE	1				
056		SC06505300	O RING S4	1				
057		SC03207610	MAIN PUMP	1				
058		SC00000067	WASHER 5	17				
059		SC06505010	O RING P6	5				
060		SC06503580	BACKUP RING P6	4				
061		SC03500750	O-RING GUIDE	2				
062		SC03515230	FLANGE FOR CUTTER HEAD	1				
063		SC04500710	BALANCE STAND	1				
064		SC07511010	HEX. SOCKET HEAD BOLT 4X8	3				

Interchange

O : Yes

X : No

< : the new part can be substituted for the current.

> : the current part can be substituted for the new.

S : Interchangeable as a set.

