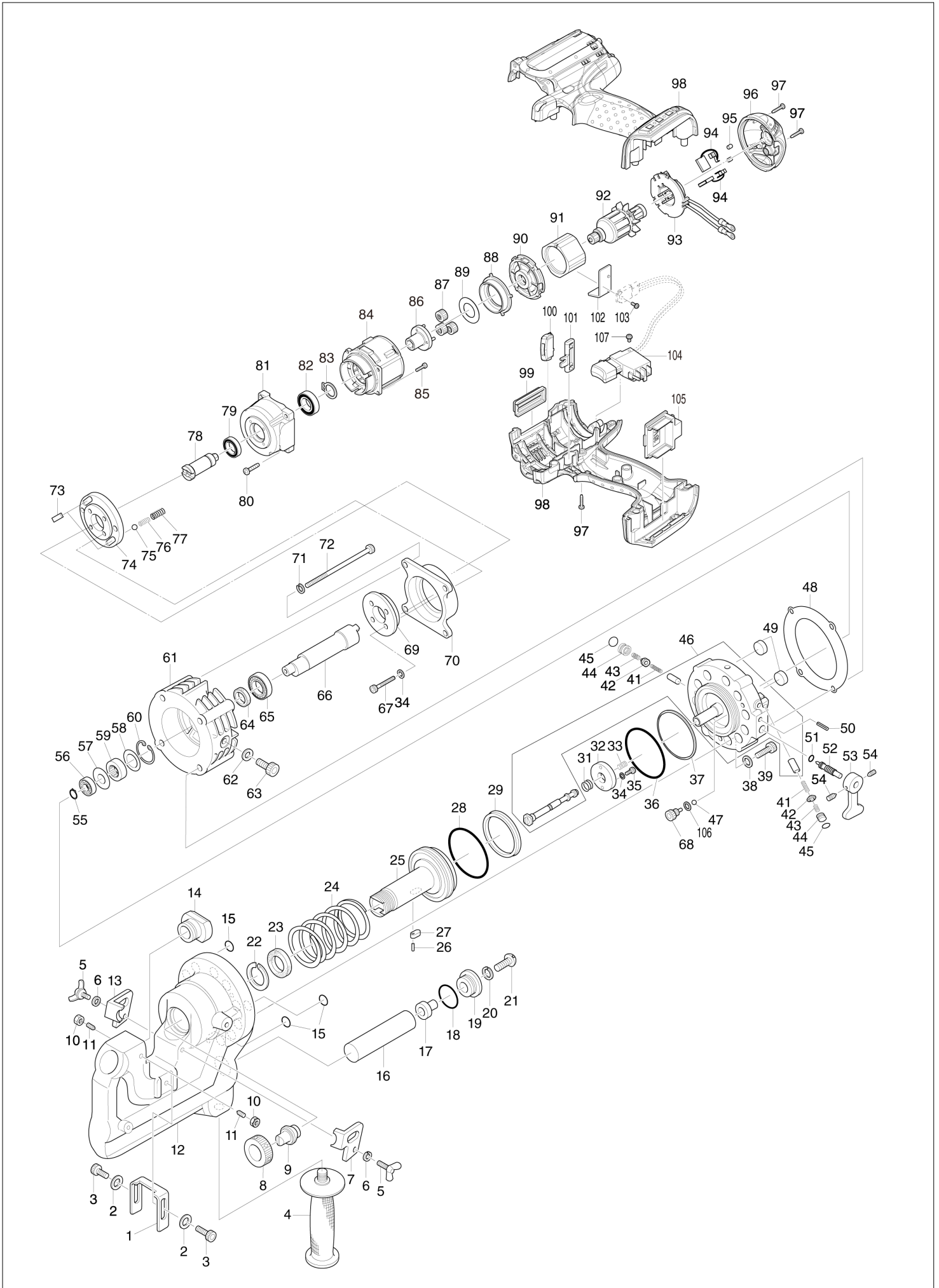


(SG) DPP200 / CORDLESS HOLE PUNCHER



SG

SINGAPORE

DPP200 / CORDLESS HOLE PUNCHER

Item	Sub	Parts No.	Parts Description	Qty	I/C	E/C No.	Close No.	Remark
001		SC03505970	SLIDE STOPPPER	1				
002		941101-4	FLAT WASHER 5	2				
003		SC00000059	HEX. SOCKET HEAD BOLT 5X12	2				
004		SC00000155	GRIP M14	1				
005		SC07552000	WING BOLT M6X15	2				
006		942151-2	SPRING WASHER 6	2				
007		SC03302040	STRIPPER R	1				
008		SC03505270	PUNCH RETAINER	1				
009		SC05340100	PUNCH 12	1				
010		931301-4	HEX. NUT M6	2				
011		913327-8	SET SCREW (CONE POINT) M6X16	2				
012		SC03103700	C FRAME	1				
	C10	SC07850050	HEX SOCKET TAPERED SCREW PLUG	3				
013		SC03302050	STRIPPER L	1				
014		SC00000215	DIE SB-12	1				
015		SC06505030	O RING P8	3				
016		SC09004910	OIL LEVELER SACK SET	1				
017		SC00000082	BUSH	1				
018		SC06505320	O RING P26	1				
019		SC03507010	BUSHING HOLDER	1				
020		SC00000065	SPRING WASHER 8	1				
021		SC00000034	SPECIAL PAN HEAD SCREW M8X20	1				
022		SC06503640	BACK UP RING	1				
023		SC06505880	SKY PACKING	1				
024		SC04000050	RETURN SPRING FOR CUTTER ROD	1				
025		SC03110750	ROD	1				
026		SC00000070	SPRING PIN 2.5X10	1				
027		SC03700020	KEY	1				
028		SC06505510	O RING S67	1				
029		SC00000096	ROD PACKING	1				
031		SC04005130	BULB RETURN SPRING	1				
032		SC03500690	STOPPER PLATE	1				
033		SC04004170	RELEASE BULB SPRING	1				
034		SC00000068	FLAT WASHER 4	6				
035		SC00000060	HEX. SOCKET HEAD BOLT 4X6	2				
036		SC06505190	O RING G65	1				
037		SC06503630	BACK UP RING G65	1				
038		SC07620040	WASHER HW8	12				
039		SC07514130	HEX. SOCKET HEAD BOLT M8X22	12				
041		SC00000150	PISTON RETURN SPRING	2				
042		SC00000149	CHECK VALVE	2				
043		SC00000021	CHECK VALVE SPRING	2				
044		SC03500540	METAL PACKING	2				
045		SC06505590	O RING S-8	2				
046		SC09050110	CYLINDER COMPLETE	1				
	C10	SC07900010	STEEL BALL S4	5				
	C20	SC07523040	BOLT HS5X5	5				
	C30	SC07900000	STEEL BALL 3	2				
	C40	SC07521010	BOLT HS4X4	2				
047		SC07900010	STEEL BALL S4	1				
048		SC04601600	LINER B	1				
049		SC00000020	MAGNET	2				
050		951116-3	SPRING PIN 4-20	1				
051		SC00000158	O RING P4	1				
052		SC00000146	RETURN VALVE	1				
053		SC00000147	RETURN LEVER	1				
054		913301-6	SET SCREW (CUP POINT) M6X6	2				
055		SC07411250	CIRCLIP STW5	1				
056		SC07100050	BALL BEARING 698	1				
057		SC03301350	WASHER B	1				
058		SC03301340	WASHER A	1				
059		SC07201030	NEEDLE BEARING	1				
060		SC07411330	RETAINING RING H25	1				
061		SC03211330	PUMP CASE	1				
062		SC00000489	SEAL WASHER WF10171.6	1				

Interchange

O : Yes

X : No

< : the new part can be substituted for the current.

> : the current part can be substituted for the new.

S : Interchangeable as a set.

