



Angle Grinder
GA7090 / GA9090 180 mm (7") / 230 mm (9")



Continuous rating input: 2,200W



Weight
GA7090 / GA9090

5.1 kg / 5.3 kg

Overall length
GA7090 / GA9090

438 mm



GA7090

180 mm (7")



GA9090

230 mm (9")



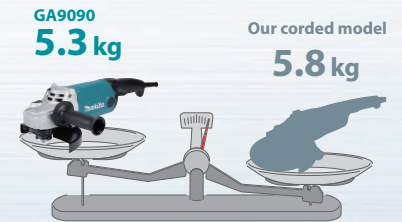
Compact and lightweight / Excellent maneuverability

The side grip can be attached closer to the center of the wheel rotation to reduce the load on the user's hand for improved maneuverability in grinding operation.

Overall length



Light weight



Reduced core abrasion

(Stator) core abrasion is reduced by adding a water absorption process to the nylon motor housing after molding to reduce dimensional changes of the housing in humid conditions.

Accessories

Wheel cover

for Abrasive cut-off wheel

GA7090
Part No. 122914-4
GA9090
Part No. 122913-6



Dust collect cover

for Diamond wheel

GA7090
Part No. 198514-2
GA9090
Part No. 198440-5



Vibration proof grip set

Part No. 194543-3



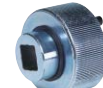
Loop handle set

Part No. 199176-9



Lock nut release socket 35 set

Part No. 194305-9



Rubber pad

Part No. 192978-2



Angle Grinder

GA7090 / GA9090 180 mm (7") / 230 mm (9")

Double Insulation

	GA7090	GA9090
Continuous rating input	2,200 W	2,200 W
Wheel diameter	180 mm (7")	230 mm (9")
Hole diameter	22.23 mm (7/8")	22.23 mm (7/8")
No load speed	8,500 min ⁻¹	6,600 min ⁻¹
Cutting depth	69 mm (2-3/4")	69 mm (2-3/4")
Vibration level	Surface grinding w/ Normal side grip: 6.9 m/s ² Surface grinding w/ Anti-vibration side grip: 7.3 m/s ² Disc sanding w/ Normal side grip: 2.9 m/s ² Disc sanding w/ Anti-vibration side grip: 3.5 m/s ²	Surface grinding w/ Normal side grip: 7.0 m/s ² Surface grinding w/ Anti-vibration side grip: 6.7 m/s ² Disc sanding w/ Normal side grip: 2.7 m/s ² Disc sanding w/ Anti-vibration side grip: 2.5 m/s ²
Vibration K factor	1.5 m/s ²	1.5 m/s ²
Sound pressure level	92 dB(A)	93 dB(A)
Sound power level	100 dB(A)	101 dB(A)
Noise K factor	3 dB(A)	3 dB(A)
Dimensions (L x W x H)	438 x 200 x 144 mm (17-1/4 x 7-7/8 x 5-5/8")	438 x 250 x 144 mm (17-1/4 x 9-7/8 x 5-5/8")
Net weight	5.1 - 7.3 kg (11.2 - 16.1 lbs.)	5.3 - 7.4 kg (11.7 - 16.3 lbs.)
Power supply cord	2.0 m (6.6 ft)	2.0 m (6.6 ft)

Standard Equipment : Side grip, Lock nut wrench, Wheel cover for cut-off wheel

The weight may differ depending on the attachments. The lightest and heaviest combinations, according to EPTA-Procedure 01/2014, are shown in the table.

Items of standard equipment and specifications may vary by country or area.

Makita Singapore Pte Ltd

7, Changi South Street 3, Singapore 486348
Phone : +65-6546-8700 Fax : +65-6546-8711
Email : msgproductteam@makita.com.sg
Website : www.makita.com.sg
Facebook : www.facebook.com/MakitaSG



VISIT OUR WEBSITE



DOWNLOAD LEAFLET

PRINTED IN SINGAPORE